

Policy No M1	Blisworth Community Primary School
Version No 5	(Safeguarding and Child Protection)



### POLICY NAME

Safeguarding and Child Protection

**This section should be completed following ratification of the Policy:**

Committee Ratifying Policy: Management	Date of meeting:
--	------------------

	Name	Signature	Date
Chair of Committee's Approval			
Chair of Governor's Approval			
Recommended Review Date:	September 2026		

### Ownership

Blisworth Community Primary School is a Local Authority School. It will be displayed on the policy list whether the policy is Local Authority adopted or school produced. The policy is issued by Louise Cooke (DSL and School Business Manager), to whom any change requests or queries should be directed by emailing [bursar@blisworth.northants-ecl.gov.uk](mailto:bursar@blisworth.northants-ecl.gov.uk)

## Version Control

This document is issued and maintained in accordance with Blisworth Community Primary School's procedures. Any change to the document will increase its version number. It is the responsibility of the reader to check with the Clerk that this is a currently valid copy.

Version	Date	Description of Change	Changed By
1	24/8/21	New policy adapted from LA updated model policy to include KCSIE 21 compliance	L Jenkins
2	28/7/22	National updates from KCSIE 2022	L Jenkins
3	28/08/23	New policy adapted from LA updated model policy to include KCSIE 2023	D Warren
4	08/03/24	National updates from Working Together 2024	D Warren
5	22/08/24	The policy has been updated to take account of changes made to KCSIE 2024.	D Warren
6	03/09/25	The policy has been updated to take account of changes made to KCSIE 2025 and Local Authority guidelines.	D Warren

<b>PERSON RESPONSIBLE FOR POLICY:</b>	<b><i>DANIELLE WARREN – DSL LEAH JENKINS – HEADTEACHER SARAH PRICE – DEPUTY DSL LOUISE COOKE – DEPUTY DSL</i></b>
---------------------------------------	---

At Blisworth Community Primary School the named personnel with designated responsibility for safeguarding are:

All duties carried out by Danielle Warren will be undertaken by Leah Jenkins who may delegate actions out to other DDSLs whilst the member of staff is on leave from school.

Designated Safeguarding Lead	Deputy Designated Safeguarding Lead(s)	Safeguarding Governor and Chair of Governors
<i>Danielle Warren (Deputy Headteacher)</i>	<i>Leah Jenkins (Headteacher) Sarah Price (Deputy Headteacher) Louise Cooke (School Business Manager)</i>	<i>Sarah Sharp Hillary Spurrier (Chair)</i>

Posters are also displayed signposting all staff to access to further Governor details, Social Care and the Designated Officer

**The named personnel with Designated Responsibility regarding allegations against staff are:**

<b>Designated Senior Manager (normally the Head teacher)</b>	<b>Deputy Designated Senior Manager</b>	<b>Chair of Governors/Proprietor (in the event of an allegation against the head teacher) OR LADO if headteacher is the sole proprietor</b>
<i>Leah Jenkins (Headteacher)</i>	<i>Danielle Warren (Deputy Headteacher)</i>  <i>Sarah Price (Deputy Headteacher)</i>	<i>Hillary Spurrier (Chair)</i>

<b>Our Data Protection Officer is:</b>	<b>Our Lead for Mental Health is:</b>	<b>Our Prevent SPOC is:</b>	<b>Our designated teacher for looked after children is:</b>
<i>Louise Cooke</i>	<i>Katie Law – overseen by Danielle Warren</i>	<i>Sarah Price</i>	<i>Danielle Warren</i>

**The named personnel with Designated Responsibility regarding specialist roles:**

Leah Jenkins oversees (Headteacher)	Danielle Warren oversees (Deputy Head - SLT) – covered by Leah Jenkins	Sarah Price oversees - (Deputy Head - SLT)	Louise Cooke (SLT)	Katie Law (SLT)
Safer recruitment  SCR  FGM  Overall policy and linked policies  Attendance	DSL  Lead overview for Online safety including Filtering and Monitoring  Looked After Children  SENDCO – SEND safeguarding, mental health and well-being lead  EYFS safeguarding lead	Deputy DSL  Prevent  Medical  Early help support  Awareness raising display and promotion  Induction of new staff, volunteers and students	SCR record holder  Lead for Online safety including Filtering and Monitoring  Safer recruitment/ personnel matters  Safeguarding support team member  (GsDPR Officer)	Behaviour and Values  PSHE Policy –  RSE Policy  Work in conjunction with DSL for online safety – education of pupils  Mental health Policy and Implementation

	(Equality Duty linked lead)			
	Early help			
	( <i>Safer recruitment trained TBC</i> )			

## Contents

1. Aim of policy .....	6
2. Scope.....	6
3. Definitions.....	7
4. Legislation and statutory guidance .....	9
5. Confidentiality and information sharing.....	10
6. Roles and responsibilities .....	12
7. Recognising and responding to abuse: How to take action .....	18
8. Specific safeguarding issues .....	22
9. Pupils with special educational needs and disabilities (SEND).....	25
10. Pupils with a social worker and those that have previously needed a social worker.....	26
11. Record-keeping .....	27
12. Safer working practice .....	28
13. Safeguarding concerns about and allegations against members of staff.....	29
14. Complaints and concerns about school safeguarding policies.....	32
15. Policy implementation, monitoring and review .....	33
Appendix A: Child on child abuse.....	33
Appendix B: Types of abuse.....	41
Appendix C: Safer recruitment .....	52
Appendix D: Responding to allegations against staff.....	58
Appendix E: Online Safety .....	63
Appendix F: Training.....	65
Appendix G: Reporting and responding to concerns flowchart.....	68
Appendix H: Looked after and previously looked after children .....	69
Appendix I: Preventative education.....	70
Appendix J: Use of school/college premises for non-school activities .....	71

Appendix K: How we safeguard pupils attending alternative provision .....	71
Appendix L: Home stays .....	<b>Error! Bookmark not defined.</b>

## 1. Aim of policy

Blisworth Community Primary School recognises our statutory responsibility to safeguard and promote the welfare of all pupils. We will endeavour to provide a safe and welcoming environment where children are respected and valued. We will be alert to the signs of abuse, neglect and exploitation and follow our procedures to ensure that children receive effective support, protection and justice.

Safeguarding is everyone's responsibility. We recognise that our school is part of a wider safeguarding system and work closely with the Northamptonshire Safeguarding Children Partnership and other agencies to promote the welfare of children. We maintain an attitude of 'it could happen here' and will consider the wishes of, and at all times, what is in the best interests of each child.

We understand that children can be abused by adults or by other children. We are committed to creating a culture of safety, that minimises the opportunity for any form of abuse (including all forms of child on child abuse) through training, education and robust response procedures.<sup>1</sup>

We are committed to anti-discriminatory practice and recognise children's diverse circumstances. Some children are at an increased risk of abuse, and additional barriers can exist for some children with respect to recognising or disclosing it. We ensure that all children have the same protection, regardless of any barriers they may face.

The aim of this policy is to;

- promote safeguarding and child protection and to provide information about how we work to keep children safe;
- ensure that all staff are aware of and clearly understand their statutory safeguarding responsibilities;
- provide all members of staff with the information required to meet their safeguarding duty and protect children from harm;
- provide stakeholders with clear information relating to the school's safeguarding and child protection procedures; and to
- ensure that we are protecting children from maltreatment or harm.

## 2. Scope

<sup>1</sup> For full details about how we work to prevent and respond to child on child abuse, please see Appendix A.

This policy applies to all teaching, non-teaching, support, supply, peripatetic, contract staff, governors, volunteers and trustees working in or on behalf of Blisworth Community Primary School. All references in this document to ‘staff’ or ‘members of staff’ should be interpreted as relating to the aforementioned unless otherwise stated.

### 3. Definitions

**Safeguarding and promoting the welfare of children** is defined in Keeping Children Safe in Education (KCSIE) 2025 as;

- Providing help and support to meet the needs of children as soon as problems emerge;
- protecting children from maltreatment, whether that is within or outside the home, including online;
- preventing the impairment of children’s mental and physical health or development;
- ensuring that children grow up in circumstances consistent with the provision of safe and effective care; and
- taking action to enable all children to have the best outcomes.

For the purposes of this policy, the term ‘safeguarding’ refers to everything that the school does to keep children safe and promote their welfare, including (but not limited to):

- Supporting pupils’ health, safety and well-being, including their mental health.
- Providing early help support, to improve outcomes for children and families at the earliest possible opportunity.
- Meeting the needs of children with special educational needs and/or disabilities.
- The use of reasonable force.
- Meeting the needs of children with medical conditions.
- Providing first aid.
- Educational visits.
- Intimate care and emotional wellbeing.
- Online safety and associated issues, including IT filtering and monitoring procedures.
- Appropriate arrangements to ensure school security, taking into account the local context.
- Keeping children safe from risks, harm and exploitation.
- Child protection.

**Child protection** is part of safeguarding and refers to activities undertaken to prevent children suffering, or being likely to suffer, significant harm.

**Abuse** is a form of maltreatment of a child. Somebody may abuse or neglect a child by inflicting harm or by failing to act to prevent harm. Harm can include ill treatment that is not physical as well as the impact of witnessing ill treatment of others. This can be particularly relevant, for example, in relation to the impact on children of all forms of domestic abuse, including where they see, hear or experience its effects. Children may be abused in a family or in an institutional or community setting by those known to them or, more rarely, by others. Abuse can take place wholly online, or technology may be used to

facilitate offline abuse. Children may be abused by an adult or adults or by another child or children.

**Neglect** is a form of abuse and is the persistent failure to meet a child's basic physical and/or psychological needs, likely to result in the serious impairment of the child's health or development<sup>2</sup>.

**Child on child abuse** refers to the abuse of a child or children perpetrated by another child or children. Child on child abuse is most likely to include, but may not be limited to:

- bullying (including cyberbullying, prejudice-based and discriminatory bullying);
- abuse in intimate personal relationships between children (sometimes known as 'teenage relationship abuse');
- physical abuse such as hitting, kicking, shaking, biting, hair pulling, or otherwise causing physical harm (this may include an online element which facilitates, threatens and/or encourages physical abuse);
- sexual violence, such as rape, assault by penetration and sexual assault (this may include an online element which facilitates, threatens and/or encourages sexual violence);
- sexual harassment, such as sexual comments, remarks, jokes and online sexual harassment, which may be standalone or part of a broader pattern of abuse;
- causing someone to engage in sexual activity without consent, such as forcing someone to strip, touch themselves sexually, or to engage in sexual activity with a third party;
- consensual and non-consensual sharing of nudes and semi nude images and or videos (also known as sexting or youth produced sexual imagery);
- upskirting, which typically involves taking a picture under a person's clothing without their permission, with the intention of viewing their genitals or buttocks to obtain sexual gratification, or cause the victim humiliation, distress or alarm; and
- initiation/hazing type violence and rituals (this could include activities involving harassment, abuse or humiliation used as a way of initiating a person into a group and may also include an online element).<sup>3</sup>
- Useful new guidance can be found at this link:  
<https://www.gov.uk/government/publications/harmful-online-challenges-and-online-hoaxes>

**Children** includes everyone under the age of 18.

**Within this policy:**

- **'Parent'** refers to birth parents and other adults in a parenting role for example adoptive parents, step parents, kinship carers and foster carers.
- **'Staff'** or **'members of staff'** refers to all teaching, non-teaching, support, supply, peripatetic, contract staff, governors, volunteers and authorised individuals working in or on behalf of Blisworth Community Primary School.
- **Victim** is a widely understood and recognised term, but we understand that not everyone who has been subjected to abuse considers themselves a victim, or would

---

<sup>2</sup> See Appendix B for more information about abuse and neglect.

<sup>3</sup> Keeping Children Safe in Education (2025)

want to be described that way. When managing an incident, we will be prepared to use any term that the child involved feels most comfortable with.

- **Alleged perpetrator(s)** and **perpetrator(s)** are widely used and recognised terms. However, we will think carefully about what terminology we use (especially in front of children) as, in some cases, abusive behaviour can be harmful to the perpetrator too. We will decide what's appropriate and which terms to use on a case-by-case basis.
- Keeping Children Safe in Education (2025) may be abbreviated to 'KCSIE'.

## 4. Legislation and statutory guidance

The school adheres to all relevant safeguarding legislation, statutory guidance and guidance from the Northamptonshire Safeguarding Children Partnership. This includes (but is not limited to):

:

### Statutory Guidance

- Keeping Children Safe in Education (2025)
- Working Together to Safeguard Children (2023)
- **Early Years Foundation Stage (2024)**
- Working together to improve school attendance (2024)
- Children missing education (statutory for local authorities) (2016)

### Legislation

- The Children Act 1989 and The Children Act 2004
- Section 5B(11) of the Female Genital Mutilation Act 2003, as inserted by section 74 of the Serious Crime Act 2015
- The Rehabilitation of Offenders Act 1974
- Safeguarding Vulnerable Groups Act 2006
- Counter-Terrorism and Security Act 2015 2015 (and the Prevent Duty guidance, updated 2023)
- The Education Act 2002
- The School Staffing (England) Regulations 2009
- **The Human Rights Act (1998)**
- **The Equality Act (2010)**
- **The Public Sector Equality Duty (PSED)<sup>4</sup>**

Guidance from the Northamptonshire Safeguarding Children Partnership (NSCP) can be found here: [Home - Northamptonshire SCP](#)

The school also has regard to relevant to non-statutory guidance relating to safeguarding, including:

---



- What to do if you're worried a child is being abused (2015)
- Guidance for safer working practice for those working with children and young people in education settings (2022)
- Working together to improve school attendance (2024)
- Meeting digital and technology standards in schools and colleges (DfE)
- Information Sharing; Advice for practitioners providing safeguarding services to children, young people, parents and carers (2024)

This policy links with other school policies and procedures, including:

- Behaviour and Values Policy
- Staff Code of Conduct **and Low Level Concerns Policy**
- Complaints policy
- Health and safety policy **including fire evacuation and lockdown procedures**
- Attendance policy
- IT/Online Safety/acceptable Use Policy
- SEND policy
- Equality policy
- Sex and relationship education policy
- PSHE Policy
- First aid policy
- Designated teacher for looked-after and previously looked-after children policy under review by lead
- Remote learning associated policies such as Acceptable Use remote learning
- Whistle-blowing
- Anti-bullying
- Peer on peer abuse appendix in this policy
- 

## Equality Statement

We are committed to anti-discriminatory practice and recognise children's diverse circumstances. Some children are at an increased risk of abuse, and additional barriers can exist for some children with respect to recognising or disclosing it. We ensure that all children have the same protection, regardless of any barriers they may face.

Please see Section 11 for further details about how we work to support children with special educational needs and disabilities (SEND).

## 5. Confidentiality and information sharing

Information sharing is vital in identifying and tackling all forms of abuse, neglect and exploitation, and in promoting children's welfare, including their educational outcomes. Schools and colleges have clear powers to share, hold and use information for these purposes. The General Data Protection Regulation (GDPR) does not prevent, or limit, the sharing of

information for the purposes of keeping children safe. Lawful and secure information sharing between schools, Children's Social Care, and other local agencies, is essential for keeping children safe and ensuring they get the support they need.

The school adheres to the Data Protection Act (2018) and the General Data Protection Regulation (2018). Please see the Data Protection Policy and Privacy Notice for more information.

### **5.1 Sharing information with parents**

Blisworth Community Primary School will ensure the Safeguarding and Child Protection Policy is available publicly via the website or can be requested via [bursar@blisworth.northants-ecl.gov.uk](mailto:bursar@blisworth.northants-ecl.gov.uk)

Where appropriate, we will discuss any concerns about a child with the child's parents. The Designated Safeguarding Lead (DSL) will normally do this in the event of a concern, suspicion or disclosure. Other staff will only talk to parents about any such concerns following consultation with the DSL.

If we believe that notifying the parents would increase the risk to the child, we will discuss this with the local authority children's social care team before doing so (see Section 5.2 for more details). In the case of allegations of abuse made against other children, we will normally notify the parents of all the children involved.

### **5.2 Consent**

The Data Protection Act 2018 introduced 'safeguarding' as a reason to be able to process sensitive, personal information, even without consent (DPA, Part 2, 18; Schedule 8, 4). All relevant information can be shared without consent if to gain consent would place a child at risk. Fears about sharing information **must not be allowed** to stand in the way of promoting the welfare and protecting the safety of children. All professionals responsible for children should not assume that someone else will pass on information that they think may be critical to keeping a child safe.

As with all data sharing, appropriate organisational and technical safeguards are in place and will be adhered to when processing safeguarding and child protection information.

When considering whether, or not, to share safeguarding information (especially with other agencies), Blisworth Community Primary School will record who they are sharing that information with and for what reason. If we have taken a decision not to seek consent from the data subject and/or parent that should also be recorded within the safeguarding file.

All staff in school will be made aware of their duties in relation to Data Protection and safeguarding, particularly in respect of confidentiality. This includes the following:

- Staff should never promise a child that they will not tell anyone about an allegation, as this may not be in the child's best interests.
- Staff who receive information about children and their families in the course of their work should share that information only within appropriate professional contexts.

- Timely information sharing is essential to effective safeguarding.
- Information must only be shared on a ‘need-to-know’ basis, but consent is not required to share information if a child is suffering, or at risk of, serious harm.<sup>5</sup>

## 6. Roles and responsibilities

Safeguarding and child protection is everyone’s responsibility. This policy applies to all staff, volunteers and governors in the school and is consistent with the procedures of the three safeguarding partners. Our policy and procedures also apply to extended school and off-site activities.

### **6.1 Governing bodies and proprietors**

Governing bodies have a strategic leadership responsibility for Blisworth Community Primary School’s safeguarding arrangements. The governing body will appoint a senior board level (or equivalent) Governor Safeguarding Lead to monitor the effectiveness of this policy in conjunction with the full governing board. This is always a different person from the DSL. The Governor Safeguarding Lead is Sarah Sharp.

Governors/proprietors will ensure that there are mechanisms in place to assist staff in understanding and discharging their statutory safeguarding roles and responsibilities. Governors will ensure that the school is working with local safeguarding partners and that the school contributes to multi-agency working, adhering to Working Together to Safeguard Children (2023). All governors will read KCSIE (2025) and a record will be kept of this.

Part 2 of KCSIE (2025) sets out the responsibilities of governing bodies and our school governors will adhere to this guidance at all times. As part of these responsibilities the governors will;

- ensure that they comply with their duties under statutory guidance and legislation including its obligations under the Human Rights Act 1998, the Equality Act 2010 (including the Public Sector Equality Duty), and our school’s local multi-agency safeguarding arrangements;
- work to facilitate a whole school to safeguarding, by ensuring that safeguarding and child protection underpin all relevant aspects of policy and process;
- ensure that policies, procedure and training at Blisworth Community Primary School are effective and comply with the law at all times and that they allow concerns to be responded to in a timely manner;
- ensure that safeguarding training for staff, including online safety training, is integrated, aligned and considered as part of the whole school or college safeguarding approach and wider staff training and curriculum planning;
- ensure that the school takes into account local criteria for action and protocol for assessment and supply information as requested by the three safeguarding partners;
- ensure that the school has an effective child protection policy, which is published on the school website and/or available by other means and review this annually;
- ensure that the school has systems in place to allow children to raise concerns, which

---

<sup>5</sup> See Working Together to Safeguard Children (2013), for more information.

- are well-promoted, well-understood and easily accessible;
- ensure that the school takes safeguarding concerns seriously and takes the wishes and feelings of children into account;
- ensure that there are systems in place for young people to safely express their views and give feedback on safeguarding practice;
- ensure that the school has a suitable behaviour policy for pupils and a staff behaviour policy or Code of Conduct;
- ensure that all staff undergo safeguarding and child protection training (including online safety which, amongst other things, will include an understanding of the expectations, applicable roles and responsibilities in relation to filtering and monitoring) on induction and regularly thereafter;
- consider a whole-school approach to online safety, including the use of mobile technology in school;
- ensure that there are clear systems and processes in place for identifying when children may be experiencing mental health problems;
- ensure that children are taught about safeguarding, including online safety. See section 8.6 and Appendix E of this policy for further information;
- ensure that appropriate safeguarding arrangements are in place to respond to children missing from education and those who are absent from education, particularly on repeat occasions and/or for prolonged periods;
- appoint an appropriate member of staff from the senior leadership team to the role of Designated Safeguarding Lead to take lead responsibility for safeguarding and child protection (including online safety and understanding the filtering and monitoring systems and processes in place) and ensure that the DSL has the appropriate status and authority to carry out their job, including additional time, funding, training, resources and support;
- ensure that appropriate filters and monitoring systems are in place to keep children safe online
- regularly review the effectiveness of school filters and monitoring systems. They should ensure that the leadership team and relevant staff are:
  - aware of and understand the systems in place
  - manage them effectively
  - know how to escalate concerns when identified
- ensure that there are appropriate procedures in place to manage both allegations against staff (including supply staff, volunteers and contractors) and concerns that do not meet the harm threshold (low level concerns)<sup>6</sup>.
- respond to allegations of abuse against the headteacher. The Chair of Governors will act as the ‘case manager’ in the event that an allegation of abuse is made against the head teacher, where appropriate (see Appendix D).

## **6.2 The headteacher**

The headteacher is responsible for the implementation of this policy. The headteacher will:

- ensure that this policy is reviewed annually and ratified by the governing body;
- ensure that this policy and associated procedures are adhered to by all staff and take action as necessary if not;
- ensure that staff (including temporary staff) and volunteers are informed of our systems

---

<sup>6</sup> See Appendix D for more details.

that support safeguarding, including this policy, as part of their induction.

- ensure that all staff are made aware of the named governor for safeguarding and the Designated Safeguarding Lead;
- ensure that the role of 'Designated Safeguarding Lead' is explicit in the role-holder's job description, that they have appropriate time, funding, training and resources and that there is always adequate cover if the DSL is absent;
- decide whether to have one or more deputy safeguarding leads and ensure they are trained to the same standard as the Designated Safeguarding Lead;
- organise appropriate cover for the role of Designated Safeguarding Lead for any out of hours/out of term activities;
- appoint a 'Designated Teacher for Looked After and Previously Looked After Children' to promote the educational achievement of children looked after and previously looked after;
- appoint a lead for online safety (Danielle Warren – DSL as per KCSIE 2023 Paragraph 103);
- ensure that all recruitment follows the safer recruitment guidance (see Part 3 of KCSIE) and a single, central record is maintained with details of all members of staff who are in contact with children;
- respond to allegations of abuse against all other members of staff and act as the 'case manager' in the event of an allegation of abuse made against another member of staff or volunteer, where appropriate;
- make decisions regarding all low-level concerns;
- refer cases where a person is dismissed or left due to risk/harm to a child to the Disclosure and Barring Service as required;
- ensure that the school works with social care, the police, health services and other services to; promote the welfare of children; provide a co-ordinated offer of early help when need is identified; contribute to inter-agency plans for children subject to children protection plans and to protect children from harm;
- safeguard children's wellbeing and maintain public trust in the teaching profession as part of their professional duties (Teaching Standards, 2012);
- ensure that children's social care (from the host local authority or placing authority) have access to the school to conduct, or to consider whether to conduct a section 47 or section 17 assessment, as per Keeping Children Safe in Education (September 2025);
- ensure the relevant staffing ratios are met, where applicable (Early years providers and primary schools); and
- make sure each child in the Early Years Foundation Stage is assigned a key person (their class teacher)

### **6.3 The Designated Safeguarding Lead (DSL)**

The full responsibilities of the DSL are set out in Annex C, KCSIE (2025).

The DSL is a member of the Senior Leadership Team.

Our DSL is Danielle Warren – Deputy Headteacher and SENDCO

The DSL takes lead responsibility for child protection and wider safeguarding including online safety.

When the DSL is absent, the Headteacher – Leah Jenkins / Deputy DSLs Sarah Price, Louise Cooke – will act as cover.

If the DSL and Headteacher are not available, the deputy DSLs will act as cover (for example, during out-of-hours/out-of-term activities).

Any deputies will be trained to the same standard as the designated safeguarding lead.

Whilst the activities of the designated safeguarding lead can be delegated to appropriately trained deputies, the ultimate **lead responsibility** for child protection, as set out above, remains with the designated safeguarding lead; this **lead responsibility** should not be delegated.

The Designated Safeguarding Lead will;

- Act as a source of support and expertise on matters relating to safeguarding and child protection to ensure that other members of staff can carry out their safeguarding duty;
- Advise on the response to safeguarding concerns;
- Liaise with the Local Authority and work with other agencies in line with ‘Working Together to Safeguard Children (2023);
- Identify if children may benefit from early help;
- Refer suspected cases, as appropriate, to the relevant body (local authority children’s social care, Channel programme, Disclosure and Barring Service, and/or police), and support staff who make such referrals directly
- Make referrals to the Channel programme where there is a radicalisation concern and/or support staff that make a referral to Channel;
- Support the school with regards to their responsibilities under the Prevent duty and provide advice and support on protecting children from radicalisation;
- Refer cases to the police where a crime may have been committed;
- Be available during school hours for staff to discuss any safeguarding concerns. In the event that they are not available, a deputy or the head teacher will be made available;
- Undertake training to equip them with the skills to carry out the role and update this every two years;
- Ensure all staff that work directly with children have read and understood Part 1 and Annex B of Keeping Children Safe in Education (September 2025);
- Ensure all staff that do not work directly with children have read either Part 1 or Annex A (as appropriate) of Keeping Children Safe in Education (2025);
- Update their knowledge and skills regularly and keep up with any developments relevant to their role;
- Provide staff in school with the knowledge, skills and support required to safeguard children;
- Take responsibility for the accurate and timely recording of safeguarding and child protection concerns and take overall responsibility for safeguarding and child protection files;
- Take responsibility for the transfer of safeguarding files when a child leaves the school.
- Attend or ensure an appropriate representative attends multi-agency safeguarding or child protection meetings;
- Work closely with other relevant education professionals (e.g. SENCO, Virtual School Head) to ensure children with additional vulnerabilities are safeguarded;
- Support children who have experienced or are experiencing safeguarding or child protection issues by using information they hold about children with a social worker to make decisions in the best interests of the child’s safety, welfare and to help promote educational outcomes. This will include ensuring that staff know who these children

are, understand their academic progress and attainment and maintain a culture of high aspirations for this cohort; supporting teaching staff to identify the challenges that children in this group might face and the additional academic support and adjustments that they could make to best support these children;

- Promote a ‘culture of safeguarding’, in which every member of the school community acts in the best interests of the child;
- Ensure that staff are aware of the school’s unauthorised absence procedures and children missing education procedures;
- Regularly meet with the safeguarding link governor and/or Chair of Governors to review safeguarding at the school.
- Liaise with the headteacher regarding safeguarding cases and issues;
- Have a good understanding of harmful sexual behaviour and how to support children in the event that this issue arises;
- Know what local specialist support is available to support all children involved (including victims and alleged perpetrators) in sexual violence and sexual harassment, and be confident as to how to access this support; and
- Be aware that children must have an ‘appropriate adult’ to support and help them in the case of a police investigation or search and understand.
- Should the DSL need to be contacted out of school hours, members of the community should email **admin@blisworth.northants.sch.uk**. The local authority also holds a school mobile number to a DSL. Staff and professionals have the contact information for DSLs to make direct contact.
- During school hours, would usually DSL on school site but staff have access to their mobile number should they need a specific DSL.

#### **6.4 All staff**

Staff play a particularly important role because they are in a position to identify concerns in order to provide help for children. All staff;

- have a responsibility to provide a safe environment, where children can learn;
- will be trained so that they know what to do if a child tells them that he/she is being abused or neglected, including specific issues such as FGM, and how to maintain an appropriate level of confidentiality while liaising with relevant professionals;
- will be able to identify indicators of abuse, neglect and exploitation;
- will be made aware of systems in the school that support safeguarding and child protection;
- will be made aware of safeguarding issues that put children at risk of harm and behaviours associated with these risks;
- should ensure that they know what to do if a child makes a disclosure of abuse and never promise confidentiality when a child makes a disclosure;
- will be made aware of and should be clear on the school’s or college’s policy and procedures with regards to child on child abuse and the important role they have to play in preventing it and responding where they believe a child may be at risk from it;
- will be made aware of the early help process and understand their role in it;
- should be prepared to identify children who may benefit from early help and will discuss early help requirements with the safeguarding lead in the first instance;
- may be required to support social workers and other agencies following a referral;
- will be made aware of the process for making referrals to Children’s Social Care

(though the MASH), understand statutory assessments and the role that they may be expected to play in such assessments;

- should be prepared to make referrals to the MASH if they have concerns about a child's welfare and understand the role that they may be expected to play in such assessments;
- will receive regularly updated safeguarding and child protection training to cover all of the above, as well as online safety (including IT filtering and monitoring procedures and how to report related safeguarding or technical concerns);
- reinforce the importance of online safety when communicating with parents. This includes making parents aware of what we ask children to do online (e.g. sites they need to visit or who they'll be interacting with online);
- will receive safeguarding updates throughout the year as part of continuous professional development;
- will be encouraged to contribute to the development of safeguarding policy and practice;
- will be aware of new guidance stating that they need to be aware that:
- "All staff should be aware that children may not feel ready or know how to tell someone that they are being abused, exploited, or neglected, and/or they may not recognise their experiences as harmful. For example, children may feel embarrassed, humiliated, or being threatened. This could be due to their vulnerability, disability and/or sexual orientation or language barriers. This should not prevent staff from having a professional curiosity and speaking to the DSL if they have concerns about a child. It is 7 Detailed information on statutory assessments can be found in Chapter 1 of Working Together to Safeguard Children also important that staff determine how best to build trusted relationships with children and young people which facilitate communication."
- should always seek advice from the Designated Safeguarding Lead if they are unsure;
- provide a safe space for pupils who are LGBT to speak out and share their concerns; and
- all teachers should safeguard children's wellbeing and maintain public trust in the teaching profession as part of their professional duties (Teaching Standards, 2012).

All staff will be made aware of our systems and documents that support safeguarding, including this policy, the staff code of conduct, the role and identity of the designated safeguarding lead (DSL) and any deputies, the behaviour policy and the safeguarding response to children missing from education and children who are absent from education, particularly on repeat occasions and/or for prolonged periods.

All staff that work directly with children will be provided with a copy of, and must read, Part 1, Part 5 and Annex B of Keeping Children Safe in Education (September 2025) annually and will receive annually updated training on their safeguarding roles and responsibilities.

Staff that do not work directly with children will be provided with a copy of either Part 1 or Annex A of Keeping Children Safe in Education (2025) and must read this document. All regular staff (by term listed above) to do so – those in regular contact or regular attendance working with children. This does not apply to occasional, supervised visitors.

All staff will sign a declaration at the beginning of each academic year to say that they have reviewed the guidance.



Although there are extensive mechanisms in place to support staff understanding in relation to safeguarding and child protection, there is an expectation that if staff are unclear on any aspects of school safeguarding policy or practice, they speak to the Designated Safeguarding Lead without delay, so that additional training can be put in place.

## 7. Recognising and responding to abuse: How to take action

If a member of staff, parent or member of the public is concerned about a pupil's welfare, they should report it to the DSL as soon as possible. On occasions when the DSL is not available, it should be reported to the deputy safeguarding lead/s without delay. If in exceptional circumstances, the DSL (or deputy) is not available, this should not delay appropriate action being taken. Staff should consider speaking to a member of the senior leadership team and/or take advice from local children's social care. The details for contacting Northamptonshire's MASH and Designated Officer and what to do are on display at school.

Although any member of staff can make a referral to children's social care, where possible there should be a conversation with the DSL. All staff must follow the procedures set out below in the event of a safeguarding issue.

All staff will be alert to indicators of abuse (including child on child abuse) and will report any of the following to the Designated Safeguarding Lead immediately;

- any concern or suspicion that a child has sustained an injury outside what is reasonably attributable to normal play;
- any concerning behaviours exhibited by children that may indicate that they have been harmed or are at risk of harm, including unusual changes in mood or behaviour, concerning use of language and/or concerning drawings or stories;
- any significant changes in attendance or punctuality;
- any significant changes in a child's presentation;
- any indicators that a child may be experiencing child on child abuse;
- any concerns relating to people who may pose a risk of harm to a child; and/or
- any disclosures of abuse that children have made.

More information about our approach to child on child abuse (including sexual violence and sexual harassment) can be found at Appendix A.

The following procedures are in line with statutory guidance (see Section 4) and the Northamptonshire Safeguarding Children Partnership's Threshold Guidance (2023)<sup>7</sup>. Referral procedures can be found in section 7.

### **7.1 If a child discloses that they are suffering or at risk of suffering abuse**

If a child discloses that he or she has been abused in some way, the member of staff/volunteer will:

- listen to what is being said without displaying shock or disbelief;
- accept what is being said;

---

<sup>7</sup> <http://www.northamptonshirescb.org.uk/schools/toolkits-docs-schools/thresholds-and-pathways/>

- allow the child to talk freely;
- reassure the child, but do not make promises which it might not be possible to keep;
- never promise a child that they will not tell anyone - as this may ultimately not be in the best interests of the child;
- reassure him or her that what has happened is not his or her fault;
- stress that it was the right thing to tell;
- listen, only asking questions when necessary to clarify;
- not criticise the alleged perpetrator;
- explain what has to be done next and who has to be told;
- make a written record (see Record Keeping); and
- pass the information to the Designated Safeguarding Lead without delay by immediately speaking to a DSL/ Deputy (as soon as possible put provisions for cover in place or request DSL support by electronic means). It is important to understand that CPOMs is a recording NOT a reporting system. The record must also be promptly made – with extremely detailed and accurate recording. You may also add on ‘what you feel worried about for the child or family’ clearly marked as this. If you cannot access the electronic reporting CPOMS seek immediate support from a DSL or the office team. Records must be prompt and accurate and all reports should not be delayed. By submitting the form, you are signing electronically that you have created this record. Alternatively, if appropriate, make a referral to children’s social care and/or the police directly (see 9.2), and tell the DSL as soon as possible that you have done so.

All staff will reassure victims that they are being taken seriously and that they will be supported and kept safe. A victim should never be given the impression that they are creating a problem by reporting abuse, sexual violence or sexual harassment, nor should a victim ever be made to feel ashamed for making a report.

We recognise that some children may:

- Not feel ready, or know how to tell someone that they are being abused, exploited or neglected.
- Not recognise their experiences as harmful.
- Feel embarrassed, humiliated or threatened. This could be due to their vulnerability, disability, sexual orientation and/or language barriers.

None of this should stop you from having a ‘professional curiosity’ and speaking to the DSL if you have concerns about a child.

## **7.2 If a child is suffering or likely to suffer harm, or in immediate danger**

If you think that a child is suffering or at risk of suffering significant harm, you must report this to the designated safeguarding lead immediately. On occasions when the designated safeguarding lead is not available, it should be reported to the deputy safeguarding lead without delay or a senior member of staff.

Where possible, there should be a conversation with the Designated Safeguarding Lead but a referral must be made if a child may be suffering or at risk of suffering harm. **Anyone can**

**make a referral to children's social care.** If anyone other than the DSL makes a referral to children's social care or to the police, they should inform the DSL as soon as possible.

### **7.3 If you have concerns about a child (as opposed to believing a child is suffering or likely to suffer from harm, or is in immediate danger)**

The flowchart detailed in Appendix G illustrates the procedure to follow if you have any concerns about a child's welfare. Where possible, speak to the DSL first to agree a course of action.

The DSL will decide on the most appropriate course of action and whether the concerns should be referred to children's social care, using the **Northamptonshire Thresholds Guidance**<sup>8</sup>. If it is decided to make a referral to children's social care the parent will be informed, unless to do so would place the child at further risk or undermine the collection of evidence. See Section 5 for more details.

All concerns, discussions and decisions will be recorded in writing.

The DSL will provide guidance on the appropriate action. Options will include:

- managing any support for the child internally via the school's own pastoral support processes;
- seeking advice from the local early help co-ordinator/s;
- an Early Help Assessment; or
- a referral for statutory services where the child is or might be in need or suffering or likely to suffer significant harm.

### **7.4 Early help**

All staff should be prepared to identify children who may benefit from early help. Early help is support for children of all ages that improves a family's resilience and outcomes or reduces the chance of a problem getting worse. If early help is appropriate, the DSL will generally lead on liaising with other agencies and setting up an inter-agency assessment as appropriate. Staff may be required to support other agencies and professionals in an early help assessment, in some cases acting as the lead practitioner. Any such cases should be kept under constant review and consideration given to a referral to children's social care for assessment for statutory services if the child's situation does not appear to be improving or is getting worse. Timelines of interventions will be monitored and reviewed.

All staff will be made aware of the early help process, and understand their role in identifying emerging problems, sharing information with other professionals to support early identification and assessment of a child's needs. It is important for children to receive the right help at the right time to address risks and prevent issues escalating. This also includes staff monitoring the situation and feeding back to the Designated Safeguarding Lead any ongoing/escalating concerns so that consideration can be given to a referral to children's social care if the child's situation does not appear to be improving.

---

<sup>8</sup> <http://www.northamptonshirescb.org.uk/schools/toolkits-docs-schools/thresholds-and-pathways/>

We recognise that any child can be the victim of abuse and may benefit from early help. However, we will be particularly vigilant to potential need for early help if a child;

- is disabled or has certain health conditions and has specific additional needs
- has special educational needs (whether or not they have a statutory Education, Health and Care plan) has a mental health need
- is a young carer
- is showing signs of being drawn in to anti-social or criminal behaviour, including gang involvement and association with organised crime groups or county lines
- is frequently missing/goes missing from education, home or care,
- has experienced multiple suspensions, is at risk of being permanently excluded from schools, colleges and in Alternative Provision or a Pupil Referral Unit
- is at risk of modern slavery, trafficking, sexual and/or criminal exploitation
- is at risk of being radicalised or exploited
- has a parent or carer in custody, or is affected by parental offending
- is in a family circumstance presenting challenges for the child, such as drug and alcohol misuse, adult mental health issues and domestic abuse
- is misusing alcohol and other drugs themselves
- is at risk of so-called ‘honour’-based abuse such as Female Genital Mutilation or Forced Marriage
- is a privately fostered child.

## **7.5 Referrals**

If it is appropriate to refer the case to local authority children’s social care or the police, the DSL will make the referral or support you to do so. If you make a referral directly (see Section 7.2), you must tell the DSL as soon as possible.

Children’s social care assessments should consider where children are being harmed in contexts outside the home, so the school will provide as much information as possible as part of the referral process. This will allow any assessment to consider all the available evidence and enable a contextual approach to address such harm.

The local authority will make a decision within 1 working day of a referral about what course of action to take and will let the person who made the referral know the outcome. The DSL or person who made the referral must follow up with the local authority if this information is not made available, and ensure outcomes are properly recorded.

If the child’s situation does not seem to be improving after the referral, the DSL or person who made the referral must follow local escalation procedures to ensure their concerns have been addressed and that the child’s situation improves.<sup>9</sup>

The DSL should refer all cases of suspected abuse or neglect to the Multi Agency Safeguarding Hub (MASH), police (cases where a crime may have been committed) and to the Channel programme where there is a radicalisation concern. Safeguarding Referrals must be made in one of the following ways:

---

<sup>9</sup> The NSCP **Escalating for the right Outcome’ – Professional Disagreements policy** can be found here:

<http://www.northamptonshirescb.org.uk/schools/case-conflict-resolution-protocol/>

<sup>9</sup> <https://nctrust.co.uk/report-a-concern-or-request-support/>

<sup>9</sup> The Designated Safeguarding Lead may make use of the NPCC guidance ‘[When to call the police](#)’.

- By telephone contact to the Multi-Agency Safeguarding Hub (MASH): **0300 126 7000** (Option 1).
- By using the online referral form found at: **MASH ONLINE REFERRAL**<sup>10</sup>
- In an emergency outside office hours, contact children's social care out of hours team on 0300 126 7000 or the Police<sup>11</sup>
- If a child is in immediate danger at any time, left alone or missing, you should contact the police directly and/or an ambulance using 999.

## 8. Specific safeguarding issues

For more information relating to specific safeguarding issues, please see Appendix B.  
For more information about child on child abuse, please see Appendix A.

### **8.1 Female Genital Mutilation (FGM)**

Any teacher who discovers (either through disclosure by the victim or visual evidence) that an act of FGM appears to have been carried out on a pupil under 18 must immediately report this to the police, personally. This is a statutory duty, and teachers will face disciplinary sanctions for failing to meet it. Unless they have good reason not to, they should also discuss the case with the DSL and involve children's social care as appropriate. Any other member of staff who discovers that an act of FGM appears to have been carried out on a pupil under 18 must speak to the DSL and follow our local safeguarding procedures.

The duty for teachers mentioned above does not apply in cases where a pupil is *at risk* of FGM or FGM is suspected but is not known to have been carried out. Staff should not examine pupils.

Any member of staff who suspects a pupil is *at risk* of FGM or suspects that FGM has been carried out must speak to the DSL and follow our local safeguarding procedures.

Any member of staff who suspects a pupil is at risk of FGM or suspects that FGM has been carried out must speak to the DSL and follow our local safeguarding procedures.

**<http://www.northamptonshirescb.org.uk/health-professionals/safeguarding-topics/mandatory-reporting-fgm/>**

### **8.2 Radicalisation and extremism**

All schools are subject to a duty under section 26 of the Counter-Terrorism and Security Act 2015 in the exercise of their functions to have “due regard” to the need to prevent people from being drawn into terrorism. In the event that concerns are raised relating to radicalisation and extremism, the DSL should be informed immediately.

We promote tolerance and cohesion by teaching our children to be inclusive of their differences through our school values and within our PSHE curriculum.

<sup>10</sup> <https://www.nctrust.co.uk/Pages/home.aspx>

<sup>10</sup> <https://nctrust.co.uk/report-a-concern-or-request-support/>

<sup>11</sup> The Designated Safeguarding Lead may make use of the NPCC guidance ‘[When to call the police](#)’.

We adhere to the Prevent Duty statutory guidance (2023).

### **8.3 Children potentially at greater risk of harm**

The school recognises that some children need a social worker due to abuse, neglect, exploitation or family circumstances and that abuse and trauma can leave children vulnerable to further harm, as well as educational disadvantage.

The DSL will hold information relating to social workers working with children at the school/college. This information will inform decisions about safeguarding and promoting welfare (including the provision of pastoral and/or academic support).

We will also take action to promote the educational outcomes of and to protect;

- Children missing education;
- Children missing from home or care.

There are other familial issues that can have a detrimental impact on children. We work with other agencies in line with Keeping Children Safe in Education (2025) to support children and families in the following circumstances:

- Children facing the court procedures and/or children in the court system.
- Children with family members in prison.
- Children who are homeless.
- Children who need a social worker.

### **8.4 Mental health**

Mental health problems can, in some cases, be an indicator that a child has suffered or is at risk of suffering abuse, neglect or exploitation.

Staff will be alert to behavioural signs that suggest a child may be experiencing a mental health problem or be at risk of developing one. Where children have suffered abuse and neglect, exploitation, or other potentially traumatic adverse childhood experiences, this can have a lasting impact throughout childhood, adolescence and into adulthood. It is key that staff are aware of how these children's experiences, can impact on their mental health, behaviour and education.

If staff have a mental health concern about a child we will respond to the concern, inform and discuss our concerns with parents/carers and seek ways to support the child in and out of school.

If you have a mental health concern about a child that is also a safeguarding concern, take immediate action by following the steps in Section 7.

If you have a mental health concern that is not also a safeguarding concern, speak to the DSL to agree a course of action.

Only appropriately trained professionals should attempt to make a diagnosis of a mental health concern. However, Blisworth Community Primary School will provide information and signposting services to children and parents and assist with the teaching of emotional health

and wellbeing to children in our curriculum. The DSL is also our SENDCO and works with the school community along with external agencies to identify and support those with mental health difficulties.

Refer to the Department for Education guidance on **mental health and behaviour in schools**<sup>12</sup> for more information.

### **8.5 Child on child abuse**

Blisworth takes all reports and concerns about child on child abuse, including child on child sexual violence and harassment, very seriously. This includes any reports or concerns that have occurred outside of the school or college premises, or online.

In order to ensure that our policy on child on child abuse is well-promoted, easily understood and accessible, we have included information about our approach to minimising and responding to child on child abuse as an appendix. Full details of how the school prevents, responds to and supports victims of child on child abuse can be found at Appendix A.

### **8.6 Online safety, including filtering and monitoring**

Our Acceptable Use Policy is set out in a separate document and more information can be found in Appendix E of this policy. We ensure that we have effective mechanisms to identify, intervene in, and escalate any incident where appropriate. Online safety is included in our curriculum at all levels and information is also provided to parents/carers.

All staff are made aware of the school policy on online safety, which sets our expectations relating to:

- creating a safer online environment – including training requirements, filters and monitoring;
- what staff should be alert to, what to report and how staff should report any concerns – including those related to the efficacy of filtering and monitoring systems;
- giving everyone the skills, knowledge and understanding to help children and young people stay safe on-line;
- inspiring safe and responsible use and behaviour;
- safe use of mobile phones both within school and on school trips/outings;
- safe use of camera equipment, including camera phones; and
- what steps to take if you have concerns and where to go for further help.

Staff must read the Online Safety Policy in conjunction with our Code of Conduct in relation to personal online behaviour.

Any concerns related to children's safety online (either safeguarding or technical) should be reported to the DSL immediately.

Where safeguarding training can resonate with staff's personal experiences, the school will make adjustments to support the staff member whilst also ensuring that they meet their

---

<sup>12</sup> <https://www.gov.uk/government/publications/mental-health-and-behaviour-in-schools--2>

safeguarding responsibilities along with the knowledge and skills to recognise and respond to safeguarding concerns.

### **Pupil mobile phones**

Phones are not allowed at school unless agreed in exceptional circumstances where a child needs one for travelling to/ from school. In this case, there will be an agreed procedure where phones are safely stored during the school day. Phones are not allowed to be used in school and must be handed to the school office where they will be stored securely during the school day. Online safety is taught within the school curriculum along with other opportunities and further updates as required including those responsive to individual incidents.

### **8.7 Children who are gay, lesbian, bisexual, or gender questioning**

We will:

- Create a culture where these children are able to speak out and share their concerns;
- Support and safeguard children in line with guidance and legislation;
- We teach our children to be inclusive through our school values and within our PSHE curriculum.

### **8.8 Elective home education**

We understand that some parents choose to educate their children at home, are legally able to do so and this in itself is not a safeguarding issue. We encourage parents who are considering removing a pupil from roll for home education to meet with us prior to making a final decision to discuss this with us. This is particularly important where a child has special educational needs or a disability, and/or has a social worker, and/or is otherwise vulnerable.

From September 2016 the Education (Pupil Registration) (England) Regulations 2006 were amended so that schools must inform their LA of all deletions from their admission register when a child is taken off roll. As such, we will notify the LA when a child is removed from roll to be educated at home.

## **9. Pupils with special educational needs and disabilities (SEND)**

We recognise that pupils with special educational needs (SEN) and disabilities can face additional safeguarding challenges. Additional barriers can exist when recognising abuse, neglect and exploitation in this group, including;

- assumptions that indicators of possible abuse such as behaviour, mood and injury relate to the child's disability without further exploration;
- pupils being more prone to peer group isolation than other pupils;
- the potential for pupils with SEN and disabilities being disproportionately impacted by behaviours such as bullying, without outwardly showing any signs; and/or
- communication barriers and difficulties in overcoming these barriers.

We offer extra pastoral support for pupils with SEN and disabilities. This includes but is not limited to: support plans, interventions and we ensure that the SENDCO who is also the DSL leads these cases.



More information can be found about support for children with SEND here:

- **SEND Code of Practice<sup>13</sup>**
- **Specialist SEND support services in West Northants<sup>14</sup>**
- **Specialist SEND support services in North Northants<sup>15</sup>**

## 10. Pupils with a social worker and those that have previously needed a social worker

Pupils may need a social worker due to safeguarding or welfare needs. We recognise that a child's experiences of adversity and trauma can leave them vulnerable to further harm as well as potentially creating barriers to attendance, learning, behaviour and mental health. We work with the local authority to ensure that we are providing effective support for this group of children. The role of virtual school head now includes a non-statutory responsibility for oversight of the attendance, attainment and progress of children with a social worker and children in kinship care..

The DSL and all members of staff will work with and support social workers to help protect vulnerable children.

Where we are aware that a pupil has a social worker, the DSL will always consider this fact to ensure any decisions are made in the best interests of the pupil's safety, welfare and educational outcomes. For example, it will inform decisions about;

- responding to unauthorised absence or missing education where there are known safeguarding risks; and
- the provision of pastoral and/or academic support.

We have contact plans for children with a social worker, and other children who we have safeguarding concerns about, for circumstances where they won't be attending school

Where a child has a social worker, an individual plan, which sets out how often the school will make contact, which staff member and how staff will make contact. Teachers track all pupils during home learning and phone home if weekly contact has not had via the learning platform or virtual sessions. In addition, phase leaders/ deputy DSLs ensure an individual plan is established for children we consider vulnerable as well as those with a social worker. Where a pupil is a cause for concern, the deputy DSLs will make contact in addition to class teacher contacts. If no contact can be achieved or concerns remain, a door-stop visit will take place. If there is still no response, MASH (or the Police in cases of immediate harm) will be contacted.

We will have agreed these plans with children's social care where relevant, and will review them regularly.

---

<sup>13</sup> <https://www.gov.uk/government/publications/send-code-of-practice-0-to-25>

<sup>14</sup> <https://www.westnorthants.gov.uk/specialist-send-support-services>

<sup>15</sup> <https://www.northnorthants.gov.uk/specialist-send-support-services>

## 11. Record-keeping

All safeguarding concerns, discussions and decisions made and the reasons for those decisions must be recorded in writing. . This includes instances where referrals were or were not made to another agency. If in doubt about recording requirements staff should discuss this with the DSL.

When a child has made a disclosure, the member of staff/volunteer should;

- record as soon as possible after the conversation. Use CPOMs following the information in the ‘if a child makes a disclosure’ section above.
- not destroy the original notes in case they are needed by a court;
- record the date, time, place and any noticeable non-verbal behaviour and the words used by the child;
- draw a diagram to indicate the position of any injuries if relevant; and
- record statements and observations rather than interpretations or assumptions

All records need to be given to the DSL promptly. No copies should be retained by the member of staff or volunteer.

The Designated Safeguarding Lead will ensure that all safeguarding records are managed in accordance with the Education (Pupil Information) (England) Regulations 2005. All concerns, discussions and decisions made, and the reasons for those decisions, should be recorded in writing. Information should be kept confidential and stored securely.

Records will include:

- a clear and comprehensive summary of the concern;
- details of how the concern was followed up and resolved; and
- a note of any action taken, decisions reached and the outcome.

Non-confidential records will be easily accessible and available. Confidential information and records will be held securely and only available to those who have a right or professional need to see them. We will hold records in line with our records retention schedule.

If a child for whom the school has, or has had, safeguarding concerns moves to another school, the DSL will ensure that their child protection file is forwarded promptly and securely, and separately from the main pupil file.

To allow the new school/college to have support in place when the child arrives, this should be within:

- 5 days for an in-year transfer, or within
- The first 5 days of the start of a new term

In addition, if the concerns are significant or complex, and/or social services are involved, the DSL will speak to the DSL of the receiving school and provide information to enable them to have time to make any necessary preparations to ensure the safety of the child.

Appendix C sets out our policy on record-keeping specifically with respect to recruitment and pre-employment checks. Appendix D sets out our policy on record-keeping with respect to allegations of abuse made against staff.

## Relationships, sex and health education (RSHE)

### Promoting safeguarding and welfare in the curriculum

*Blisworth Primary School have a comprehensive curriculum which has a inclusive approach. We have year group specific topics embedded in the curriculum alongside age-related assemblies led by school staff and professionals.*

The school plays a crucial role in preventative education. This is in the context of a whole-school approach to preparing pupils for life in modern Britain, and a culture of zero tolerance of sexism, misogyny/misandry, homophobia, biphobia and sexual violence/harassment. This will be underpinned by our:

- Behaviour policy
- Pastoral support system
- Planned programme of relationships, sex and health education (RSHE), which is inclusive and delivered regularly, tackling issues such as:
  - Healthy and respectful relationships.
  - Boundaries and consent.
  - Stereotyping, prejudice and equality.
  - Body confidence and self-esteem.
  - How to recognise an abusive relationship (including coercive and controlling behaviour).
  - The concepts of, and laws relating to, sexual consent, sexual exploitation, abuse, grooming, coercion, harassment, rape, domestic abuse, so-called honour-based violence such as forced marriage and female genital mutilation (FGM) and how to access support.
  - What constitutes sexual harassment and sexual violence and why they are always unacceptable.

## 12. Safer working practice

We work to create and embed a culture of openness, trust and transparency, in which school's values and expected behaviour (as set out in the staff code of conduct) are constantly lived, monitored and reinforced by all staff.

We expect all staff to act with professionalism at all times. To reduce the risk of unsafe or harmful practice, all staff should receive training on safer working practice and should be familiar with the guidance contained in the staff handbook/school code of conduct/staff behaviour policy and Safer Recruitment Consortium document **Guidance for safer working**

**practice for those working with children and young people in education settings (September 2022).<sup>16</sup>**

Governors/proprietors and senior leaders will ensure that this policy is adhered to by:

- ensuring staff are clear about what appropriate behaviour is, and are confident in distinguishing expected and appropriate behaviour from concerning, problematic or inappropriate behaviour, in themselves and others through effective training;
- empowering staff to share any low-level safeguarding concerns;
- addressing unprofessional behaviour and supporting the individual to correct it at an early stage; and
- providing a responsive, sensitive and proportionate handling of such concerns when they are raised.

Governors/proprietors will help to identify any weakness in the school's safeguarding system.

Staff are expected to adhere to the staff Code of Conduct at all times. In the event of any concerns or allegations, the school will deal with them promptly, in line with local guidance and KCSIE (2025).

### **12.1 Staff use of mobile phones and smart technology**

Staff are allowed to bring their personal phones to school for their own use but will limit such use to non-contact time when pupils are not present. Staff members' personal phones will remain out of sight during contact time with pupils (unless it's essential for communication with SLT). If staff have personal calls they need to receive or want to be available should a dependent's school/ carer contact them in an emergency, a suitable location/ action can be agreed with SLT. Staff will not take pictures or recordings of pupils on their personal phones or cameras. Smart technology including watches are permitted to be worn by staff but should be accessed in and used in line with mobile phone use – notifications should be on silent during contact time with pupils. We recognise that in the EYFS a high number of individual photos need to be taken and uploaded to Tapestry and for curriculum content in KS1. In this instance, it is not always practical to complete the task on school site, in school hours. Any uploading of photographs must take place from school devices and not stored on any other devices. School cameras and iPad should be used to take photographs in school and stored on the school server or in books, then deleted from the device.

We will follow the General Data Protection Regulation and Data Protection Act 2018 when taking and storing photos and recordings for use in the school.

## **13. Safeguarding concerns about and allegations against members of staff**

### **13.1 Allegations that may meet the harms threshold**

---

<sup>16</sup> <https://www.saferrecruitmentconsortium.org/>

In the event that there is an allegation of abuse against a member of staff, we will adhere to Part 4, Section 1 of KCSIE (2025) and Northamptonshire Safeguarding Children Partnership guidance. See Appendix D for more details.

Allegations that may indicate that a person would pose a risk of harm if they continue to work in their present position or in any capacity with children in a school or college include:

- staff having behaved in a way that has harmed a child, or may have harmed a child;
- staff possibly committing a criminal offence against or related to a child;
- staff behaving towards a child or children in a way that indicates they may not be suitable to work with children; and/or
- staff behaving or possibly behaving in a way that indicates they may not be suitable to work with children.

This includes behaviour or incidents that have occurred both in school and outside of school.

### **13.2 Allegations against the headteacher**

If an allegation is made against the Headteacher, it must be reported to Hilary Spurrier, the chair of governors. The designated officer can also be contacted if the person is concerned/ unable to contact the Chair of Governors.

### **13.3 Allegations against staff**

If a concern or allegation of abuse arises against any member of staff, supply teacher or volunteer other than the Headteacher, it must be reported to the Headteacher without delay. This includes supply staff, volunteers and anyone working in or on behalf of the school, whether paid or unpaid. Allegations of abuse against staff must be reported to the Headteacher or Chair of Governors as appropriate and not discussed directly with the person involved.

The Headteacher or Chair of Governors should consider if the concern or allegation meets the threshold for Designated Officer intervention.

Allegations against staff relating to a position of trust issue will be referred to the Local Authority designated officer within 24 hours. If a child has suffered or may have suffered abuse or harm, a MASH referral will also be made and the police will be contacted if necessary.

A referral to the Disclosure and Barring Service will be made if a member of staff is dismissed or removed from their post as a result of safeguarding concerns, or would have been removed if they had not have resigned.

### **13.4 Safeguarding concerns that do not meet the harm threshold (low level concerns)**

In the event that there is a safeguarding concern about a member of staff, we will adhere to guidance outlined in Part 4, Section 2 of KCSIE (2025) and Northamptonshire Safeguarding Children Partnership guidance.

The term ‘low-level’ concern does not mean that it is insignificant, it means that the behaviour towards a child does not meet the harms threshold. A low-level concern is any concern – no

matter how small, and even if no more than causing a sense of unease or a ‘nagging doubt’ - that an adult working in or on behalf of the school or college may have acted in a way that:

- is inconsistent with the staff code of conduct, including inappropriate conduct outside of work; and
- does not meet the allegations threshold or is otherwise not considered serious enough to consider a referral to the LADO.

It is essential that low level concerns are reported. Such behaviours can exist on a wide spectrum, from the inadvertent or thoughtless, or behaviour that may look to be inappropriate, but might not be in specific circumstances, through to that which is ultimately intended to enable abuse.

Examples of such behaviour could include, but are not limited to:

- Being overly friendly with children
- Having favourites
- Taking photographs of children on their mobile phone
- Engaging with a child on a one-to-one basis in a secluded area or behind a closed door
- Humiliating pupils

We will act quickly, proportionately and appropriately in the event of a low level concern, to prevent abuse or harm of a child and to promote a culture of safeguarding. Dealing with low level concerns also protects those working in or on behalf of schools and colleges from potential false allegations or misunderstandings.

Staff will receive training about what may constitute a low-level concern. More information can be found in Part 4 of KCSIE (2025).

### **13.5 Reporting low level concerns**

Low level concerns should be reported to The DSL/Deputy DSL/ phase leader and also on the SLT system for SLT shared knowledge.

All low-level concerns should be recorded in writing. The record should include details of the concern, the context in which the concern arose, and action taken. The name of the individual sharing their concerns should also be noted, if the individual wishes to remain anonymous then that should be respected as far as reasonably possible. These records will be kept on the SLT system.

The headteacher may:

- Speak directly to the person who raised the concern (unless it has been raised anonymously).
- Speak to the individual involved and/or witnesses.

The headteacher will then categorise the type of behaviour and decide on an appropriate course of action. This will be recorded, along with rationale for any decisions made and details of action taken.

Records will be reviewed so that potential patterns of concerning, problematic or inappropriate behaviour can be identified. In the event that patterns and/or wider cultural issues within the school are identified, the school will either:

- take action through our disciplinary procedures;
- refer behaviour to the local authority designated officer/s where a pattern of behaviour moves from a concern to meeting the harms threshold; and/or
- revise policies or implement extra training as appropriate, to minimise the risk of behaviour happening again.

We will retain low level concerns information for a period of five years, longer to account for any pupil related to the concern for the duration of their time in school and one year longer, throughout a person's employment.

### **13.6 Supply staff**

Although the school/college does not directly employ supply teachers, we will ensure that any concerns or allegations against supply teachers are handled properly. We will never cease to use a supply teacher for safeguarding reasons without finding out the facts and liaising with the Local Authority Designated Officer to reach a suitable outcome.

Governing bodies will liaise with the supply agency to determine whether to suspend or redeploy the supply teacher whilst they carry out their investigation.

The school will inform supply agencies of its process for managing allegations and will take account of the agency's policies and their duty to refer to the DBS as personnel suppliers. Informing supply agencies of our process for managing allegations includes inviting the agency's human resource manager (or equivalent) to meetings and regularly updating agencies on relevant school policies.

## **14. Complaints and concerns about school safeguarding policies**

### **14.1 Complaints against staff**

Complaints against staff that are likely to require a child protection investigation will be handled in accordance with our procedures for dealing with low level concerns or allegations of abuse made against staff (see Section 13).

### **14.2 Other complaints**

Complaints will be followed using the complaint's policy. Where there is a related safeguarding concern, a Governor with appropriate knowledge or work place experience (past or present) will also be involved. **Governors will be mindful about the role that a complaint may have in making safeguarding of pupils more complex including the role of disguised compliance/ and/ or using a complaint to deflect from a safeguarding concern the school has about a child.**

### **14.3 Whistleblowing**

Our priority is to safeguard the welfare of our pupils. If anyone believes that there is something not in line with policy occurring or that could be improved, they should feel confident to talk to the Headteacher openly. There is also a Whistle-Blowing policy to escalate concerns which is made available to adults in school.

See KCSIE for more details.

## 15. Policy implementation, monitoring and review

The policy will be reviewed annually by the governing body. It will be implemented through the school's induction and training programme, and as part of day to day practice. Compliance with the policy will be monitored by the Designated Safeguarding Lead and through staff performance measures.

## Appendices

---

<b>Appendix A: Child on child abuse.....</b>	<b>Error! Bookmark not defined.</b>
<b>Appendix B: Types of abuse .....</b>	<b>Error! Bookmark not defined.</b>
<b>Appendix C: Safer recruitment .....</b>	<b>Error! Bookmark not defined.</b>
<b>Appendix D: Responding to allegations against staff .....</b>	<b>Error! Bookmark not defined.</b>
<b>Appendix E: Online Safety.....</b>	<b>Error! Bookmark not defined.</b>
<b>Appendix F: Training.....</b>	<b>Error! Bookmark not defined.</b>
<b>Appendix G: Reporting and responding to concerns flowchart.....</b>	<b>Error! Bookmark not defined.</b>
<b>Appendix H: Looked after and previously looked after children ....</b>	<b>Error! Bookmark not defined.</b>
<b>Appendix I: Preventative education.....</b>	<b>Error! Bookmark not defined.</b>
<b>Appendix J: Use of school/college premises for non-school activities....</b>	<b>Error! Bookmark not defined.</b>
<b>Appendix K: How we safeguard pupils attending alternative provision</b>	<b>Error! Bookmark not defined.</b>
<b>Appendix L: Home stays .....</b>	<b>Error! Bookmark not defined.</b>



## Appendix A: Child on child abuse

Child on child abuse is any abuse of a child or children that is perpetrated by another child or children. This includes all forms of sexual harassment, sexual violence and abuse. We strive to create a culture of safety, where children are free from harassment or abuse of any kind. We take a zero-tolerance approach to sexual violence and sexual harassment – it is never acceptable and it will not be tolerated.

We know that even if we do not receive any reports relating to child on child abuse, it does not mean that it is not happening. We support and encourage anyone – especially our pupils – to come forward to share any concerns about child on child abuse so that we can take action to keep all children safe.

Child on child abuse is most likely to include, but may not be limited to:

- bullying (including cyberbullying, prejudice-based and discriminatory bullying);
- abuse in intimate personal relationships between children (sometimes known as ‘teenage relationship abuse’);
- physical abuse such as hitting, kicking, shaking, biting, hair pulling, or otherwise causing physical harm (this may include an online element which facilitates, threatens and/or encourages physical abuse);
- sexual violence, such as rape, assault by penetration and sexual assault (this may include an online element which facilitates, threatens and/or encourages sexual violence);
- sexual harassment, such as sexual comments, remarks, jokes and online sexual harassment, which may be standalone or part of a broader pattern of abuse;
- causing someone to engage in sexual activity without consent, such as forcing someone to strip, touch themselves sexually, or to engage in sexual activity with a third party;
- consensual and non-consensual sharing of nudes and semi nude images and or videos (also known as sexting or youth produced sexual imagery);
- upskirting, which typically involves taking a picture under a person’s clothing without their permission, with the intention of viewing their genitals or buttocks to obtain sexual gratification, or cause the victim humiliation, distress or alarm; and
- initiation/hazing type violence and rituals (this could include activities involving harassment, abuse or humiliation used as a way of initiating a person into a group and may also include an online element).<sup>17</sup>

All children are capable of abusing their peers and we recognise that girls are more likely to be the victims of child on child abuse and boys’ perpetrators. All child on child abuse is unacceptable and will be taken seriously.

### **Harmful sexual behaviour (HSB)**

We recognise that children’s sexual behaviour exists on a wide continuum, ranging from normal and developmentally expected to inappropriate, problematic, abusive and violent. We refer to problematic, abusive and violent sexual behaviour as ‘harmful sexual behaviour’.

---

<sup>17</sup> Keeping Children Safe in Education (2025)

When responding to HSB, we will:

- Consider the behaviours in a child protection context;
- Consider the ages and developmental stages of the children involved;
- Take action in line with local thresholds and pathways guidance and relevant statutory guidance; and
- Seek specialist support as required.

We will take action at the earliest possible point, to safeguard children and to prevent problematic, abusive and/or violent behaviour in the future.

We recognise that children displaying HSB have often experienced their own abuse and trauma and we will offer support as required.

### **Staff training**

All staff are made aware that children can abuse other children, that this can happen online or in person, at school or outside of school. All staff will receive training so that they can confidently recognise the indicators and signs of child on child abuse in order to identify it and respond appropriately to reports. All staff will be made aware of the school's policy and procedures with regards to child on child abuse and the crucial role that they play in preventing it and responding to it as necessary. It will be made clear that addressing inappropriate behaviour (even if it appears to be relatively innocuous) can be an important intervention that helps prevent problematic, abusive and/or violent behaviour in the future.

### **Procedures for minimising opportunities for child on child abuse**

We recognise that a crucial part of our safeguarding responsibility is to minimise the opportunity for child on child abuse to occur. In order to do this, and to establish a safe environment for all children, we:

- have a robust behaviour policy, which makes it clear that we have a zero tolerance approach to any kind of child on child abuse;
- have an effective PSHE and RSE curriculum
- ensure staff understand what is meant by child on child abuse and the school policy on child on child abuse by delivering both formal and informal training, SLT on playground duty to monitor and support lunchtime staff
- train staff thoroughly so that they challenge inappropriate behaviour (even if it appears to be relatively innocuous);
- train staff thoroughly so that they are confident to challenge inappropriate behaviours between peers, that are actually abusive in nature;
- never downplay certain behaviours, for example dismissing sexual harassment as “just banter”, “just having a laugh”, “part of growing up” or “boys being boys”, as this can lead to a culture of unacceptable behaviours, an unsafe environment for children and in worst case scenarios a culture that normalises abuse leading to children accepting it as normal and not coming forward to report it; and
- recognise that sexual harassment and sexual violence, as well as other forms of child on child abuse, may be happening even if they are not reported.

## **How we address child on child abuse within the curriculum and across the school**

We teach the children about online safety and wider PHSE curriculums through the Jigsaw scheme adapted for our school and under the leadership of an experienced teacher. In the event that we become concerned, we seek specialist advice where needed from the Online Safety Officer or school nurse or other organisations as appropriate. We recognise the ever-growing changes to online technology and the risk that are posed and aim to address key concepts such as consent, pornography, sexting, sharing of images and supporting children to recognise the risks associated with AI, deep fakes and disinformation.

We ensure that our systems for reporting all safeguarding concerns are well promoted, easily understood and easily accessible for children to confidently report abuse, knowing their concerns will be treated seriously. We ensure that children are aware of our safeguarding and child protection procedures, including how to raise concerns about child on child abuse, by promoting positive relationships with their trusted adults in school. Children are encouraged to speak to their class teacher regarding any concerns in school and this is reminded throughout the school year. In addition, children are educated on issues such as consent, sexualised content including sharing images and videos as part of their age-appropriate curriculum. Where issues arise outside of taught year groups, the DSL will plan and deliver bespoke sessions to address these issues.

We also ensure that we act in the best interest of all children by recognising that any harmful behaviour is not acceptable regardless of a pupils' needs or background which could cause risks to others. This includes intervention and reference to the behaviour policy where a pupils' behaviour towards others presents as a risk of harm to others. We recognise that whilst support may be in place to support a pupil whom has experienced abuse, we must act in their best interests by ensuring that the cycle of abuse does not continue with inappropriate behaviour presented towards others.

## **Additional Vulnerabilities**

We recognise that some children may be more vulnerable to child on child abuse than others. For example, children who have already experienced abuse, those that have special educational needs or disabilities (SEND), children living in care and children who are LGBTQ+, may be more likely to face child on child abuse than other children. We recognise that girls are more likely to be the victims of child on child abuse than boys but that this is not always the case. Some children may face additional barriers to telling anyone about abuse because of their vulnerability, disability, sex, ethnicity and/or sexual orientation. We work to protect children with additional vulnerabilities by closely monitoring individual profiles and tracking of their needs. There will be regular pupil voice meetings throughout the year in addition to other monitoring.

## **How to report concerns**

### **Our pupils**

If a young person witnesses or experiences any form of child on child abuse, we strongly encourage them to speak to a trusted member of staff, parent or trusted adult about it. If a child discloses to an adult outside of school, the adult should contact the Designated Safeguarding Lead without delay to report the issue.

All victims will be taken seriously, regardless of how long it has taken them to come forward and they will be supported and kept safe. Abuse that occurs online or outside of the school will be treated equally seriously. A victim will never be given the impression that they are creating a problem by reporting peer on peer abuse, including sexual violence or sexual harassment. A victim will never be made to feel ashamed for making a report or have their experience minimised.

In school, pupils can:

- Talk to a trusted adult of their choice
- Ask an adult at home to tell us

These methods can be used to report any form of harm or abuse, or can be used by pupils to share worried or concerns about any issue, including peer on peer abuse.

In the event that a pupil reports or discloses peer on peer abuse, we will take their report seriously, take prompt action to respond and to safeguard the child or children involved and we will ensure that we are listening to the voice of the child when deciding on the best course of action to take. We will always act in the best interests of children. Following any disclosures or reports of peer on peer abuse, we will review our school systems, training and policies to determine if any learning can be derived from the situation to further strengthen our approach to this issue. We will always encourage our pupils to safely express their views and give feedback on how they have been supported following a safeguarding concern.

### **Our staff**

Any member of staff that has concerns about child on child abuse should follow the procedure set out in Section 7 and must report concerns immediately.

### **Others**

We encourage everyone to report any form of abuse or harm perpetrated by or against our pupils. Any concerns should be reported to the Designated Safeguarding Lead, using the details on the front page of this policy.

### **Wider concerns**

We strive to create a safe and welcoming environment for all children. If you have any concerns about our culture of safeguarding, policy or procedures, please **direct these to the safeguarding lead immediately, or follow our school Complaints Policy.**

### **What happens when an allegation of child on child abuse is made?**

We will act and investigate inline with our school behaviour and anti-bullying policy alongside any relevant policies too.

We will adhere to Keeping Children Safe in Education (2025) when responding to incidents of child on child abuse. The school takes child on child abuse seriously and will respond to all concerns or disclosures of child on child abuse, including those that have occurred outside of school and online, immediately.

Upon receiving a concern, report or disclosure of abuse, the Designated Safeguarding Lead will decide what further action is necessary.

Our starting point regarding any report of child on child sexual harassment or violence should always be that there is a zero tolerance approach, it is never acceptable and it will not be tolerated. It is especially important not to pass off any sexual violence or sexual harassment as “banter”, “just having a laugh”, “part of growing up” or “boys being boys” as this can lead to a culture of unacceptable behaviours and an unsafe environment for children.

The subsequent action taken will vary depending on the type of child on child abuse and the severity of the incident/s disclosed. When founded and confirmed as child-on-child abuse, the Designated Safeguarding Lead will take contextual factors into account when managing the report.

The Designated Safeguarding Lead will always consider the following;

- the wishes of the victim in terms of how they want to proceed. The victims will be given as much control as is reasonably possible over decisions regarding how any investigation will be progressed and any support that they will be offered;
- the nature of the alleged incident(s), including: the level of coercion or threat, whether a crime may have been committed and consideration of harmful sexual behaviour;
- both the chronological ages and developmental stages of the children involved;
- any power imbalance between the children, including consideration of the age of children and whether children have special educational needs or disabilities;
- the impact on the victim;
- that sexual violence and sexual harassment can take place in intimate personal relationships between children;
- if the alleged incident is a one-off or a sustained pattern of abuse;
- if there are ongoing risks to the victim, other children, adult students or school or college staff; and
- Other related issues and wider context, such as links to child criminal or child sexual exploitation.

Depending on the nature of the incident/s, the Designated Safeguarding Lead may

- Seek further information from those involved and witnesses.
- Undertake a risk assessment and needs assessment to ascertain steps necessary to safeguard the victim, alleged perpetrator, adults and other children.
- Decide to manage the concern internally.
- Organise a meeting with relevant staff and agencies to assess risk and agree a safety plan.
- Refer the victim and/or the perpetrator to local services for Early Help.
- Refer the case to Children’s Services via a MASH referral.
- Liaise with social workers working with children involved (if applicable).
- Make a report to the police.

- Liaise with specialist services.

In the event of a disclosure of child on child sexual violence, we will make an immediate risk and needs assessment. The risk and needs assessment will consider:

- the victim, especially their protection and support (this will include considering school transport as a potentially vulnerable place for a victim or alleged perpetrator(s);
- whether there may have been other victims,
- the alleged perpetrator(s); and
- all the other children, (and, if appropriate, adult students and staff) at the school or college, especially any actions that are appropriate to protect them from the alleged perpetrator(s), or from future harms.

More information about these options in relation to sexual violence and sexual harassment can be found in Part 5 of KCSIE (2025).

### **Recording procedures**

CPOMs be used to record all concerns by staff completing the safeguarding option and the DSL making the classification.

Members of staff will follow the procedures for recording a disclosure as outlined in Section 7 of this policy.

### **How we support victims of child on child abuse**

The school recognises that child on child abuse has a significant impact on young people and victims are likely to need ongoing support. Children who are victims of sexual violence and sexual harassment wherever it happens, will likely find the experience stressful and distressing. Appropriate support will be put in place for victims of child on child abuse whilst investigation is taking place and following the initial response. Support will continue for as long as it is needed and will be reviewed regularly to ensure the victim is receiving appropriate care. The school will do everything we can to maintain the victim's normal routine. We will do everything we can to protect the victim from further bullying, harassment or abuse as a result of their disclosure.

We will follow the guidance set out in p.531 of KCSIE.

If a victim of child on child abuse moves to a new setting, the Designated Safeguarding Lead will share the necessary information to ensure that support for the child continues.

### **How we will support alleged perpetrators and perpetrators of child on child abuse**

We have a responsibility to safeguard and support all children. We will adhere to KCSIE (2025) when managing reports of child on child abuse and decide on action and support on a case by case basis.

The school has a responsibility to ensure that an alleged perpetrator continues to receive a suitable education and will consider a range of options in continuing educational provision if they are unable to attend school. Options may include

- working with agencies to explore suitable alternatives

- consider discussion with local schools to take the pupil if appropriate and agreed by all parties
- remote learning

We recognise that children who perpetrate child on child abuse may be being abused themselves. The school will continue to safeguard the alleged perpetrator and provide them with support.

A plan to reduce the risk posed by the alleged perpetrator will be put in place as part of the risk assessment made following the alleged abuse. The Designated Safeguarding Lead will take advice from children's social care, specialist services and the police as necessary.

All risk and needs assessment and action plans whether internal or multi-agency will be reviewed and updated on a regular basis. If things do not improve or deteriorate the situation should be reconsidered

The school may choose to impose a sanction or punishment on the alleged perpetrator following an incident of child on child abuse. In this case, we will follow the school Behaviour Policy in determining the level and severity of sanction.

Where a child is cautioned or receives a conviction related to an incident of child on child abuse, the school will refer to KCSIE Part 5 for guidance for actions and support.

If the alleged perpetrator moves to another setting, the Designated Safeguarding Lead will share information as necessary to safeguard the individual and other children at the new setting.

If the incident is a criminal offence and there are delays in the criminal process, the DSL will work closely with the police (and other agencies as required) while protecting children and/or taking any disciplinary measures against the alleged perpetrator. We will ask the police if we have any questions about the investigation.

### **How we will support other children who may have been affected by child on child abuse**

We would explore school nurse referrals or specialist sessions for a group. Additionally, the relationship between our pupils and staff to provide day-to-day support should also be recognised and heightened.

### **Local Safeguarding Arrangements and making referrals**

The school adheres to local safeguarding arrangements, as outlined by the Northamptonshire Safeguarding Children Partnership.

For further details of how the school works with partner agencies in responding to safeguarding incidents (including incidents of child on child abuse), please see the main body of this policy.

### **Parents**

Parents will be informed of incidents unless sharing information puts a child at greater risk of harm. Children will always be encouraged to speak to parents about child on child abuse unless it puts them at greater risk of harm.

### **Whole school response**

We will keep detailed records of any incidents of child on child abuse and will look out for potential patterns of concerning, problematic or inappropriate behaviour. Where a pattern is identified, we will take appropriate action. Consideration will be given to whether there are wider cultural issues that enabled the inappropriate behaviour to occur and in order to minimise it happening again, we may:

- Dedicate more teaching time to a particular issue or topic;
- Deliver additional staff training
- Seek agency specialist advice

The designated safeguarding lead will refer to relevant assessment tools and guidance as appropriate such as:

- Keeping Children Safe in Education (2025) part five
- Sharing nudes and semi-nudes: advice for education settings working with children and young people
- Searching, screening and confiscation at school
- Behaviour in schools
- School suspension and permanent exclusion
- Stop it Now Sexual Behaviours Traffic Light Tool
- NSCP Thresholds Document (note: this is currently under review)
- NSCP Safeguarding Children Procedures,
- When to call the police – guidance for schools and colleges

When appropriate the designated safeguarding lead may seek further advice from local or national safeguarding contacts.

## Appendix B: Types of abuse

Abuse, including neglect, and safeguarding issues are rarely standalone events that can be covered by one definition or label. In most cases, multiple issues will overlap.

**Physical abuse** may involve hitting, shaking, throwing, poisoning, burning or scalding, drowning, suffocating or otherwise causing physical harm to a child. Physical harm may also be caused when a parent or carer fabricates the symptoms of, or deliberately induces, illness in a child.

**Emotional abuse** is the persistent emotional maltreatment of a child such as to cause severe and adverse effects on the child's emotional development. Some level of emotional abuse is involved in all types of maltreatment of a child, although it may occur alone.

Emotional abuse may involve:

- Conveying to a child that they are worthless or unloved, inadequate, or valued only insofar as they meet the needs of another person
- Not giving the child opportunities to express their views, deliberately silencing them or 'making fun' of what they say or how they communicate



- Age or developmentally inappropriate expectations being imposed on children. These may include interactions that are beyond a child's developmental capability, as well as overprotection and limitation of exploration and learning, or preventing the child participating in normal social interaction
- Seeing or hearing the ill-treatment of another
- Serious bullying (including cyberbullying), causing children frequently to feel frightened or in danger, or the exploitation or corruption of children

**Sexual abuse** involves forcing or enticing a child or young person to take part in sexual activities, not necessarily involving a high level of violence, whether or not the child is aware of what is happening.

The activities may involve:

- Physical contact, including assault by penetration (for example rape or oral sex) or non-penetrative acts such as masturbation, kissing, rubbing and touching outside of clothing
- Non-contact activities, such as involving children in looking at, or in the production of, sexual images, watching sexual activities, encouraging children to behave in sexually inappropriate ways, or grooming a child in preparation for abuse (including via the internet)

Sexual abuse is not solely perpetrated by adult males. Women can also commit acts of sexual abuse, as can other children.

**Neglect** is the persistent failure to meet a child's basic physical and/or psychological needs, likely to result in the serious impairment of the child's health or development. Neglect may occur during pregnancy as a result of maternal substance abuse.

Once a child is born, neglect may involve a parent or carer failing to:

- Provide adequate food, clothing and shelter (including exclusion from home or abandonment)
- Protect a child from physical and emotional harm or danger
- Ensure adequate supervision (including the use of inadequate care-givers)
- Ensure access to appropriate medical care or treatment
- Provide a suitable education

It may also include neglect of, or unresponsiveness to, a child's basic emotional needs.

### **Children who are absent from education**

Children being absent from education for prolonged periods and/or on repeat occasions and children missing education can act as a vital warning sign to a range of safeguarding issues. This might include abuse or neglect, such as sexual abuse or exploitation or child criminal exploitation (particularly county lines), or issues such as mental health problems, substance abuse, risk of travelling to conflict zones, risk of FGM so called 'honour'-based abuse or forced marriage.

There are many circumstances where a child may become missing from education, but some children are particularly at risk. These include children who:

- Are at risk of harm or neglect.
- Are at risk of forced marriage or FGM.
- Come from Gypsy, Roma, or Traveller families.
- Come from the families of service personnel.
- Go missing or run away from home or care.
- Are supervised by the youth justice system.
- Cease to attend a school.
- Come from new migrant families.

We will follow our procedures for unauthorised absence, dealing with persistently absent pupils and children missing education to help identify the risk of abuse, neglect and exploitation and to help prevent the risks of going missing in future. This includes when problems are first emerging but also where children are already known to local authority children's social care and need a social worker (such as a child who is a child in need or who has a child protection plan, or is a looked after child), where being absent from education may increase known safeguarding risks within the family or in the community.

We will always follow up with parents/carers when pupils are not at school. This means we need to have at least two, up to date, contacts for parents/carers. Parents/carers should remember to update the school as soon as possible where these contact details change.

This includes informing the local authority if a child leaves the school without a new school being named, and adhering to requirements with respect to sharing information with the local authority, when applicable, when removing a child's name from the admission register at non-standard transition points.

Staff will be trained in signs to look out for and the individual triggers to be aware of when considering the risks of potential safeguarding concerns which may be related to being missing, such as travelling to conflict zones, FGM and forced marriage.

If a staff member suspects that a child is suffering from harm or neglect, we will follow local child protection procedures, including with respect to making reasonable enquiries. We will make an immediate referral to the local authority children's social care team, and the police, if the child is suffering or likely to suffer from harm, or in immediate danger.

### **Child criminal exploitation**

Child criminal exploitation (CCE) is a form of abuse where an individual or group takes advantage of an imbalance of power to coerce, control, manipulate or deceive a child into criminal activity, in exchange for something the victim needs or wants, and/or for the financial or other advantage of the perpetrator or facilitator, and/or through violence or the threat of violence.

The abuse can be perpetrated by males or females, and children or adults. It can be a one-off occurrence or a series of incidents over time, and range from opportunistic to complex organised abuse.

The victim can be exploited even when the activity appears to be consensual. It does not always involve physical contact and can happen online. Some specific forms of CCE can include

children being forced or manipulated into transporting drugs or money through county lines, working in cannabis factories, shoplifting or pickpocketing. They can also be forced or manipulated into committing vehicle crime or threatening/committing serious violence to others.

Children can become trapped by this type of exploitation as perpetrators can threaten victims (and their families) with violence, or entrap and coerce them into debt. They may be coerced into carrying weapons such as knives or begin to carry a knife for a sense of protection from harm from others. As children involved in criminal exploitation often commit crimes themselves, their vulnerability as victims is not always recognised by adults and professionals, (particularly older children), and they are not treated as victims despite the harm they have experienced. They may still have been criminally exploited even if the activity appears to be something they have agreed or consented to.

It is important to note that the experience of girls who are criminally exploited can be very different to that of boys. The indicators may not be the same, however professionals should be aware that girls are at risk of criminal exploitation too. It is also important to note that both boys and girls being criminally exploited may be at higher risk of sexual exploitation.

Indicators of CCE can include a child:

- Appearing with unexplained gifts or new possessions
- Associating with other young people involved in exploitation
- Suffering from changes in emotional wellbeing
- Misusing drugs and alcohol
- Going missing for periods of time or regularly coming home late
- Regularly missing school or education
- Not taking part in education

If a member of staff suspects CCE, they will discuss this with the DSL. The DSL will trigger the local safeguarding procedures, including a referral to the *local authority's children's social care team* and the police, if appropriate.

### **County Lines**

County lines is a term used to describe gangs and organised criminal networks involved in exporting illegal drugs (primarily crack cocaine and heroin) into one or more importing areas [within the UK], using dedicated mobile phone lines or other form of “deal line”.

Exploitation is an integral part of the county lines offending model with children and vulnerable adults exploited to move [and store] drugs and money. Offenders will often use coercion, intimidation, violence (including sexual violence) and weapons to ensure compliance of victims.

Children can easily become trapped by this type of exploitation as county lines gangs create drug debts and can threaten serious violence and kidnap towards victims (and their families) if they attempt to leave the county lines network.

### **Serious violence**

Signs that a child is at risk from, or involved with serious violent crime include:

- include increased absence from school;
- a change in friendships or relationships with older individuals or groups;
- a significant decline in performance;
- signs of self-harm or a significant change in wellbeing;
- signs of assault or unexplained injuries; and/or
- unexplained gifts or new possessions, which could also indicate that children have been approached by, or are involved with, individuals associated with criminal networks or gangs and may be at risk of criminal exploitation.

There are a range of risk factors which increase the likelihood of involvement in serious violence, such as

- being male;
- having been frequently absent or permanently excluded from school; and/or
- having experienced child maltreatment and having been involved in offending, such as theft or robbery.

If a member of staff suspects a child is involved in or at risk of serious violent crime, they will discuss this with the DSL. The DSL will trigger the local safeguarding procedures, including a referral to the local authority's children's social care team and the police, if appropriate.

### **Child sexual exploitation**

Child sexual exploitation (CSE) is a form of child sexual abuse where an individual or group takes advantage of an imbalance of power to coerce, manipulate or deceive a child into sexual activity, in exchange for something the victim needs or wants and/or for the financial advantage or increased status of the perpetrator or facilitator. It may, or may not, be accompanied by violence or threats of violence.

The abuse can be perpetrated by males or females, and children or adults. It can be a one-off occurrence or a series of incidents over time, and range from opportunistic to complex organised abuse.

CSE can affect any child, who has been coerced into engaging in sexual activities. This includes 16 and 17 year olds who can legally consent to have sex. Some children may not realise they are being exploited e.g. they believe they are in a genuine romantic relationship.

Children and young people often trust their abuser and may be tricked into believing they are in a loving, consensual relationship.

CSE can include both physical contact (penetrative and non-penetrative acts) and non-contact sexual activity. It can also happen online. For example, young people may be persuaded or forced to share sexually explicit images of themselves, have sexual conversations by text, or take part in sexual activities using a webcam. CSE may also occur without the victim's immediate knowledge, for example through others copying videos or images.

In addition to the CCE indicators above, indicators of CSE can include a child:

- Having an older boyfriend or girlfriend
- Suffering from sexually transmitted infections or becoming pregnant

If a member of staff suspects CSE, they will discuss this with the DSL. The DSL will trigger the local safeguarding procedures, including a referral to the local authority's children's social care team and the police, if appropriate.

### **Child abduction and community safety incidents**

Child abduction is the unauthorised removal or retention of a minor from a parent or anyone with legal responsibility for the child. Child abduction can be committed by parents or other family members; by people known but not related to the victim (such as neighbours, friends and acquaintances); and by strangers. Other community safety incidents in the vicinity of a school can raise concerns amongst children and parents, for example, people loitering nearby or unknown adults engaging children in conversation.

In order to keep children safe on the way to and from school we discourage inappropriate arrangements and would refer these as part of wider concerns. We also talk to our children about safe behaviours.

In order to keep children safe at school we have only authorised personnel on site and will access top open/ closing key points. Other policies such as fire safety and lockdown are referred to. Individual risk assessments may be created.

Incidents are only reported to parents from the community if directed to do so by the Local Authority or the Police.

In the event that anyone has concerns about child abduction or community safety incidents, they should speak to the Designated Safeguarding Lead immediately.

### **Cybercrime**

Cybercrime is criminal activity committed using computers and/or the internet. It is broadly categorised as either 'cyber-enabled' (crimes that can happen off-line but are enabled at scale and at speed on-line) or 'cyber dependent' (crimes that can be committed only by using a computer).

Cyber-dependent crimes include;

- unauthorised access to computers (illegal 'hacking'), for example accessing a school's computer network to look for test paper answers or change grades awarded;
- denial of Service (Dos or DDoS) attacks or 'booting'. These are attempts to make a computer, network or website unavailable by overwhelming it with internet traffic from multiple sources; and,
- making, supplying or obtaining malware (malicious software) such as viruses, spyware, ransomware, botnets and Remote Access Trojans with the intent to commit further offence, including those above.

Children with particular skill and interest in computing and technology may inadvertently or deliberately stray into cyber-dependent crime. If we have concerns about a child and possible risk of being drawn into cyber crime, the designated safeguarding lead (or a deputy) will consider referring into the Cyber Choices programme. This is a nationwide police programme supported by the Home Office and led by the National Crime Agency, working with regional and local policing. We may seek early help interventions and will refer to children's social care if we think a child is suffering or is at risk of suffering harm.

## **Domestic abuse**

Domestic Abuse is any incident or pattern of incidents of controlling, coercive, threatening behaviour, violence or abuse between those aged 16 or over who are, or have been, intimate partners or family members regardless of gender or sexuality.

Types of domestic abuse include intimate partner violence, abuse by family members, teenage relationship abuse (abuse in intimate personal relationships between children) and child/adolescent to parent violence and abuse.

The abuse can encompass, but is not limited to: psychological; physical; sexual; financial; and emotional.

All children can witness and be adversely affected by domestic abuse in the context of their home life where domestic abuse occurs between family members. Domestic abuse can impact on children through seeing, hearing or experiencing the effects of domestic abuse and/or experiencing it through their own intimate relationships. Exposure to domestic abuse and/or violence can have a serious, long lasting emotional and psychological impact on children. In some cases, a child may blame themselves for the abuse or may have had to leave the family home as a result.

Anyone can be a victim of domestic abuse, regardless of gender, age, ethnicity, socioeconomic status, sexuality or background, and domestic abuse can take place inside or outside of the home. Children who witness domestic abuse are also victims.

At Blisworth Community Primary School, we are working in partnership with North Northamptonshire Council and West Northamptonshire Council and Northamptonshire Police to identify and provide appropriate support to pupils who have experienced domestic abuse in their household; nationally this scheme is called Operation Encompass. In order to achieve this, North Northamptonshire Council and West Northamptonshire Council will share police information with the Designated Safeguarding Lead(s) of all domestic incidents where one of our pupils has been affected. On receipt of any information, the Designated Safeguarding Lead will decide on the appropriate support the child requires, this could be silent or overt.

All information sharing and resulting actions will be undertaken in accordance with the **‘NSCP Protocol for Domestic Abuse – Notifications to Schools’**. We will record this information and store this information in accordance with the record keeping procedures outlined in this policy.

The DSL will provide support according to the child’s needs and update records about their circumstances.

## **Homelessness**

Being homeless or being at risk of becoming homeless presents a real risk to a child’s welfare. The DSL [and deputy/deputies] will be aware of contact details and referral routes in to the local housing authority so they can raise/progress concerns at the earliest opportunity (where appropriate and in accordance with local procedures).

Where a child has been harmed or is at risk of harm, the DSL will also make a referral to children’s social care.

## **So-called ‘honour-based’ abuse (including FGM and forced marriage)**

So-called ‘honour-based’ abuse (HBA) encompasses incidents or crimes committed to protect or defend the honour of the family and/or community, including FGM, forced marriage, and practices such as breast ironing.

Abuse committed in this context often involves a wider network of family or community pressure and can include multiple perpetrators.

All forms of HBA are abuse and will be handled and escalated as such. All staff will be alert to the possibility of a child being at risk of HBA or already having suffered it. If staff have a concern, they will speak to the DSL, who will activate local safeguarding procedures.

### **Female Genital Mutilation**

The DSL will make sure that staff have access to appropriate training to equip them to be alert to children affected by FGM or at risk of FGM.

Section 8 of this policy sets out the procedures to be followed if a staff member discovers that an act of FGM appears to have been carried out or suspects that a pupil is at risk of FGM.

Indicators that FGM has already occurred include:

- A pupil confiding in a professional that FGM has taken place
- A mother/family member disclosing that FGM has been carried out
- A family/pupil already being known to social services in relation to other safeguarding issues
- A girl:
  - Having difficulty walking, sitting or standing, or looking uncomfortable.
  - Finding it hard to sit still for long periods of time (where this was not a problem previously).
  - Spending longer than normal in the bathroom or toilet due to difficulties urinating.
  - Having frequent urinary, menstrual or stomach problems.
  - Avoiding physical exercise or missing PE.
  - Being repeatedly absent from school, or absent for a prolonged period.
  - Demonstrating increased emotional and psychological needs – for example, withdrawal or depression, or significant change in behaviour.
  - Being reluctant to undergo any medical examinations.
  - Asking for help, but not being explicit about the problem.
  - Talking about pain or discomfort between her legs.

Potential signs that a pupil may be at risk of FGM include:

- The girl’s family having a history of practicing FGM (this is the biggest risk factor to consider)
- FGM being known to be practiced in the girl’s community or country of origin
- A parent or family member expressing concern that FGM may be carried out
- A family not engaging with professionals (health, education or other) or already being known to social care in relation to other safeguarding issues
- A girl:
  - Having a mother, older sibling or cousin who has undergone FGM
  - Having limited level of integration within UK society

- Confiding to a professional that she is to have a “special procedure” or to attend a special occasion to “become a woman”
- Talking about a long holiday to her country of origin or another country where the practice is prevalent, or parents stating that they or a relative will take the girl out of the country for a prolonged period
- Requesting help from a teacher or another adult because she is aware or suspects that she is at immediate risk of FGM
- Talking about FGM in conversation – for example, a girl may tell other children about it (although it is important to take into account the context of the discussion)
- Being unexpectedly absent from school
- Having sections missing from her ‘red book’ (child health record) and/or attending a travel clinic or equivalent for vaccinations/anti-malarial medication

The above indicators and risk factors are not intended to be exhaustive.

### **Forced marriage**

Forcing a person into marriage is a crime. A forced marriage is one entered into without the full and free consent of one or both parties and where violence, threats, or any other form of coercion is used to cause a person to enter into a marriage. Since February 2023 it has also been a crime to carry out any conduct whose purpose is to cause a child to marry before their eighteenth birthday, even if violence, threats or another form of coercion are not used. Forced marriage legislation applies to non-binding, unofficial ‘marriages’ as well as legal marriages.

Threats can be physical or emotional and psychological. Staff will receive training around forced marriage and the presenting symptoms. We are aware of the ‘one chance’ rule, i.e. we may only have one chance to speak to the potential victim and only one chance to save them.

If a member of staff suspects that a pupil is being forced into marriage, they will speak to the pupil about their concerns in a secure and private place. They will then report this to the DSL.

The DSL will:

- Speak to the pupil about the concerns in a secure and private place.
- Activate the local safeguarding procedures and refer the case to the local authority’s designated officer.
- Seek advice from the Forced Marriage Unit on 020 7008 0151 or [fmfco.gov.uk](mailto:fmfco.gov.uk)
- Refer the pupil to an education welfare officer, pastoral tutor, learning mentor, or school counsellor, as appropriate.

### **Private Fostering**

A private fostering arrangement is one that is made privately (without the involvement of a local authority) for the care of a child under the age of 16 years (under 18, if disabled) by someone other than a parent or close relative, in their own home, with the intention that it should last for 28 days or more.

A close family relative is defined as a ‘grandparent, brother, sister, uncle or aunt’ and includes half-siblings and step-parents; it does not include great-aunts or uncles, great grandparents or cousins.

Parents and private foster carers both have a legal duty to inform the relevant local authority at least six weeks before the arrangement is due to start; not to do so is a criminal offence.



Whilst most privately fostered children are appropriately supported and looked after, they are a potentially vulnerable group who should be monitored by the local authority, particularly when the child has come from another country. In some cases, privately fostered children are affected by abuse, neglect and exploitation, or be involved in trafficking, child sexual exploitation or modern-day slavery.

Schools have a mandatory duty to report to the local authority where they are aware or suspect that a child is subject to a private fostering arrangement. Although schools have a duty to inform the local authority, there is no duty for anyone, including the private foster carer or social workers to inform the school. However, it should be clear to the school who has parental responsibility.

School staff should notify the designated safeguarding lead when they become aware of private fostering arrangements. The designated safeguarding lead will speak to the family of the child involved to check that they are aware of their duty to inform the LA. The school itself has a duty to inform the local authority of the private fostering arrangements.

On admission to the school, we will take steps to verify the relationship of the adults to the child who is being registered.

### **Preventing radicalisation**

Radicalisation refers to the process by which a person comes to support terrorism and extremist ideologies associated with terrorist groups. Children may be susceptible to radicalisation into terrorism.

**Extremism** is the vocal or active opposition to our fundamental values, including democracy, the rule of law, individual liberty and the mutual respect and tolerance of different faiths and beliefs. This also includes calling for the death of members of the armed forces.

**Radicalisation** is the process of a person legitimising support for, or use of, terrorist violence.

**Terrorism** is an action that endangers or causes serious violence to a person/people; causes serious damage to property; or seriously interferes or disrupts an electronic system. The use or threat must be designed to influence the government or to intimidate the public and is made for the purpose of advancing a political, religious or ideological cause

The use or threat of terrorism must be designed to influence the government or to intimidate the public and is made for the purpose of advancing a political, religious or ideological cause. Schools have a duty to prevent children from being drawn into terrorism. The DSL will undertake Prevent **awareness training** and make sure that staff have access to appropriate training to equip them to identify children at risk.

We will assess the risk of children in our school being drawn into terrorism. This assessment will be based on an understanding of the potential risk in our local area, in collaboration with our local safeguarding partners and local police force.

We will ensure that suitable internet filtering is in place, and equip our pupils to stay safe online at school and at home.

There is no single way of identifying an individual who is likely to be susceptible to an extremist ideology. Radicalisation can occur quickly or over a long period.

Staff will be alert to changes in pupils' behaviour. The government website **Educate Against Hate**<sup>18</sup> and the charity **NSPCC**<sup>19</sup> say that signs that a pupil is being radicalised can include:

- Refusal to engage with, or becoming abusive to, peers who are different from themselves
- Becoming susceptible to conspiracy theories and feelings of persecution
- Changes in friendship groups and appearance
- Rejecting activities they used to enjoy
- Converting to a new religion
- Isolating themselves from family and friends
- Talking as if from a scripted speech
- An unwillingness or inability to discuss their views
- A sudden disrespectful attitude towards others
- Increased levels of anger
- Increased secretiveness, especially around internet use
- Expressions of sympathy for extremist ideologies and groups, or justification of their actions
- Accessing extremist material online, including on Facebook or Twitter
- Possessing extremist literature
- Being in contact with extremist recruiters and joining, or seeking to join, extremist organisations

Children who are at risk of radicalisation may have low self-esteem, or may be victims of bullying or discrimination. It is important to note that these signs can also be part of normal teenage behaviour – staff should have confidence in their instincts and seek advice if something feels wrong.

If staff are concerned about a pupil, they will follow our procedures set out in Section 7 of this policy, including discussing their concerns with the DSL. Staff should always take action if they are worried.

Further information on the school's measures to prevent radicalisation are set out in other school policies and procedures, including those listed earlier in the policy.

### **Missing pupils**

Our procedures are designed to ensure that a missing child is found and returned to effective supervision as soon as possible. If a child goes missing, we will:

- Expect parents to notify on the day of absence why their child is not attending and when they are expected back
- Require proof of long-term illness if considered appropriate to do so
- Seek to contact families we have not heard from on the day of absence

---

<sup>18</sup> <https://educateagainsthate.com/signs-of-radicalisation/>

<sup>19</sup> <https://www.nspcc.org.uk/keeping-children-safe/reporting-abuse/dedicated-helplines/protecting-children-from-radicalisation/>

- Carry out a door-step visit if contact cannot be made
- Refer concerns to MASH/ Police
- Complete the missing child form linked in the main body of text

**Children missing education in West Northants.<sup>20</sup>**

**Children missing education in North Northants.<sup>21</sup>**

### **Non-collection of children**

If a child is not collected at the end of the session/day, we will: contact those listed on our records repeatedly which may include a door-step visit. Out of hours social care will be contacted if the child has not been collected by 5:30pm.

## **Appendix C: Safer recruitment**

We adhere to Part 3 of Keeping Children Safe in Education at all times. We consider safeguarding throughout the recruitment process, including when defining and advertising roles.

We will record all information on the checks carried out in the school's single central record (SCR). Copies of these checks, where appropriate, will be held in individuals' personnel files. We follow requirements and best practice in retaining copies of these checks, as set out below.

### **Pre-appointment safer recruitment**

We will include the following in all job advertisements:

- our commitment to safeguarding and promoting the welfare of children;
- clear confirmation that safeguarding checks will be undertaken;
- the safeguarding responsibilities of the post as per the job description and personal specification; and
- whether the post is exempt from the Rehabilitation of Offenders Act 1974 and the amendments to the Exceptions Order 1975, 2013 and 2020.

Where a role involves engaging in regulated activity relevant to children, we will include a statement in the application form or elsewhere in the information provided to applicants that it is an offence to apply for the role if the applicant is barred from engaging in regulated activity relevant to children.

All applicants will be provided with:

- A copy of the school's child protection policy.

### **Applicants**

We require applicants to provide:

- personal details, current and former names, current address and their national insurance number;
- details of their present (or last) employment and reason for leaving;
- full employment history, (since leaving school, including education, employment and

<sup>20</sup> <https://www.westnorthants.gov.uk/attendance-and-behaviour-support-schools/tracking-children-and-their-families-who-have-gone-missing>

<sup>21</sup> <https://www.northnorthants.gov.uk/attendance-behaviour-and-home-schooling/tracking-children-and-their-families-who-have-gone-missing>

- voluntary work) including reasons for any gaps in employment;
- qualifications, the awarding body and date of award;
- details of referees/references; and
- a statement of the personal qualities and experience that the applicant believes are relevant to their suitability for the post advertised and how they meet the person specification.

We will not accept copies of curriculum vitae in place of an application form.

### **Shortlisting and selection**

Shortlisted candidates will be asked to complete a self-declaration of their criminal record or information that would make them unsuitable to work with children. For more details of what this will contain, please see Part 3 of Keeping Children Safe in Education (2025).

At least two people will carry out shortlisting and they will explore any potential concerns, including inconsistencies and/or gaps in unemployment.

We will seek references on all shortlisted candidates, including internal candidates, before interview. We will scrutinise these and resolve any concerns before confirming appointments. The references requested will ask specific questions about the suitability of the applicant to work with children.

When asked to provide references, we will ensure the information confirms whether we are satisfied with the applicant's suitability to work with children and provide the facts of any substantiated safeguarding allegations.

As part of due diligence checks, we will also consider carrying out an online search on shortlisted candidates to help identify any incidents or issues that are publicly available online that we may wish to explore with candidates at interview.

### **New staff**

When appointing new staff, we will:

- verify a candidate's identity. This includes demonstrating an awareness for the potential for individuals changing their name. Best practice is checking the name on their birth certificate, where this is available;
- obtain (via the applicant) an enhanced DBS check (including children's barred list information, for those who will be engaging in regulated activity with children);
- obtain a separate children's barred list check if an individual will start work in regulated activity with children before the DBS certificate is available;
- verify the candidate's mental and physical fitness to carry out their work responsibilities;
- verify the person's right to work in the UK, including EU nationals;
- If the person has lived or worked outside the UK, make any further checks the school or college consider appropriate;
- verify professional qualifications, as appropriate; and
- ensure that an applicant to be employed to carry out teaching work is not subject to a prohibition order.

- Check that candidates taking up a management position are not subject to a prohibition from management (section 128) direction made by the Secretary of State.
- Carry out further additional checks, as appropriate, on candidates who have lived or worked outside of the UK. These could include, where available:
  - For all staff, including teaching positions: **criminal records checks for overseas applicants.**
  - For teaching positions: obtaining a letter from the professional regulating authority in the country where the applicant has worked, confirming that they have not imposed any sanctions or restrictions on that person, and/or are aware of any reason why that person may be unsuitable to teach.
- We will ensure that appropriate checks are carried out to ensure that individuals are not disqualified under the 2018 Childcare Disqualification Regulations and Childcare Act 2006. Where we take a decision that an individual falls outside of the scope of these regulations and we do not carry out such checks, we will retain a record of our assessment on the individual's personnel file. This will include our evaluation of any risks and control measures put in place, and any advice sought.

**Regulated activity** means a person who will be:

- Responsible, on a regular basis in a school or college, for teaching, training, instructing, caring for or supervising children; or
- Carrying out paid, or unsupervised unpaid, work regularly in a school or college where that work provides an opportunity for contact with children; or
- Engaging in intimate or personal care or overnight activity, even if this happens only once and regardless of whether they are supervised or not

### **Existing staff**

If we have concerns about an existing member of staff's suitability to work with children, we will carry out all the relevant checks as if the individual was a new member of staff. We will also do this if an individual moves from a post that is not regulated activity to one that is.

We will refer to the DBS anyone who has harmed, or poses a risk of harm, to a child or vulnerable adult where:

- We believe the individual has engaged in **relevant conduct**;  
or
- The individual has received a caution or conviction for a relevant offence, or there is reason to believe the individual has committed a listed relevant offence, under the **Safeguarding Vulnerable Groups Act 2006 (Prescribed Criteria and Miscellaneous Provisions) Regulations 2009**; or
- The 'harm test' is satisfied in respect of the individual (i.e. they may harm a child or vulnerable adult or put them at risk of harm); and
- The individual has been removed from working in regulated activity (paid or unpaid) or would have been removed if they had not left

### **Agency and third-party staff**

We will obtain written notification from any agency or third-party organisation that it has carried out the necessary safer recruitment checks that we would otherwise perform. We will

also check that the person presenting themselves for work is the same person on whom the checks have been made.

## **Contractors**

We will ensure that any contractor, or any employee of the contractor, who is to work at the school has had the appropriate level of DBS check (this includes contractors who are provided through a PFI or similar contract). This will be:

- An enhanced DBS check with barred list information for contractors engaging in regulated activity.
- An enhanced DBS check, not including barred list information, for all other contractors who are not in regulated activity but whose work provides them with an opportunity for regular contact with children.
- We will obtain the DBS check for self-employed contractors.
- We will not keep copies of such checks for longer than 6 months.
- Contractors who have not had any checks will not be allowed to work unsupervised or engage in regulated activity under any circumstances.
- We will check the identity of all contractors and their staff on arrival at the school.
- For self-employed contractors such as music teachers or sports coaches, we will ensure that appropriate checks are carried out to ensure that individuals are not disqualified under the 2018 Childcare Disqualification Regulations and Childcare Act 2006. Where we decide that an individual falls outside of the scope of these regulations and we do not carry out such checks, we will retain a record of our assessment. This will include our evaluation of any risks and control measures put in place, and any advice sought.

## **Trainee/student teachers**

Where applicants for initial teacher training are salaried by us, we will ensure that all necessary checks are carried out.

Where trainee teachers are fee-funded, we will obtain written confirmation from the training provider that necessary checks have been carried out and that the trainee has been judged by the provider to be suitable to work with children.

In both cases, this includes checks to ensure that individuals are not disqualified under the 2018 Childcare Disqualification Regulations and Childcare Act 2006.

## **Volunteers**

We will:

- Never leave an unchecked volunteer unsupervised or allow them to work in regulated activity.
- Obtain an enhanced DBS check with barred list information for all volunteers who are new to working in regulated activity.
- Carry out a risk assessment when deciding whether to seek an enhanced DBS check without barred list information for any volunteers not engaging in regulated activity. We will retain a record of this risk assessment.
- Ensure that appropriate checks are carried out to ensure that individuals are not disqualified under the 2018 Childcare Disqualification Regulations and Childcare Act 2006. Where we decide that an individual falls outside of the scope of these regulations

and we do not carry out such checks, we will retain a record of our assessment. This will include our evaluation of any risks and control measures put in place, and any advice sought.

## **Governors**

- All governors will have an enhanced DBS check without barred list information.
- They will have an enhanced DBS check with barred list information if working in regulated activity.
- All governors will also have a section 128 check (as a section 128 direction disqualifies an individual from being a maintained school governor).

### **All local governors and members will also have the following checks:**

- A section 128 check (to check prohibition on participation in management under **section 128 of the Education and Skills Act 2008**). [Section 128 checks are only required for local governors if they have retained or been delegated any management responsibilities.]
- Identity
- Right to work in the UK
- Other checks deemed necessary if they have lived or worked outside the UK

### **All governors will also have the following checks:**

- Identity
- Right to work in the UK
- Other checks deemed necessary if they have lived or worked outside the UK

## **Staff working in alternative provision settings**

Where we place a pupil with an alternative provision provider, we obtain written confirmation from the provider that they have carried out the appropriate safeguarding checks on individuals working there that we would otherwise perform.

## **Checking the identity and suitability of visitors**

All visitors will be required to verify their identity to the satisfaction of staff and to leave their belongings, including their mobile phone(s), in a safe place during their visit. They will need to be signed in electronically and with a staff member witnessing and helping.

If the visitor is unknown to the setting, we will check their credentials and reason for visiting before allowing them to enter the setting. Visitors should be ready to produce identification. Visitors are expected to sign the electronic visitors' book and wear a visitor's badge.

Visitors to the school who are visiting for a professional purpose, such as educational psychologists and school improvement officers, will be asked to show photo ID and the organisation sending the professional, such as the LA or educational psychology service, will provide annually written confirmation that an enhanced DBS check with barred list information has been carried out.

All other visitors, including visiting speakers, will be accompanied by a member of staff at all times. We will not invite into the school any speaker who is known to disseminate extremist views, and will carry out appropriate checks to ensure that any individual or organisation using school facilities is not seeking to disseminate extremist views or radicalise pupils or staff.

#### Adults who supervise pupils on work experience

When organising work experience, we will ensure that policies and procedures are in place to protect children from harm.

We will also consider whether it is necessary for barred list checks to be carried out on the individuals who supervise a pupil under 16 on work experience. This will depend on the specific circumstances of the work experience, including the nature of the supervision, the frequency of the activity being supervised, and whether the work is regulated activity. Third party letters will also apply if the role constitutes the need.



## Appendix D: Responding to allegations against staff

This section details the school response to allegations that may meet the harms threshold (see Section 13.1 in main policy for more details). This applies to any allegations against a current member of staff, including a supply teacher, volunteer or contractor.

It applies regardless of whether the alleged abuse took place in the school or elsewhere. Allegations against a teacher who is no longer teaching and historical allegations of abuse will be referred to the police.

If we're in any doubt as to whether a concern meets the harm threshold, we will consult our local authority designated officer (LADO).

We will deal with any allegation of abuse against a member of staff or volunteer quickly, in a fair and consistent way that provides effective child protection while also supporting the individual who is the subject of the allegation. Our procedures for dealing with allegations will be applied with common sense and judgement.

For more information about how the school responds to low-level concerns (concerns do not meet the harms threshold) please see Section 13 of this policy.

### **Suspension of the accused until the case is resolved**

Suspension will not be the default position, and will only be considered in cases where there is reason to suspect that a child or other children is/are at risk of harm, or the case is so serious that it might be grounds for dismissal. In such cases, we will only suspend an individual if we have considered all other options available and there is no reasonable alternative. We will seek views from our personnel (HR) adviser, the local authority designated officer/s, the police and/or Children's Social Care (as appropriate).

Based on an assessment of risk, we will consider alternatives such as:

- Redeployment within the school so that the individual does not have direct contact with the child or children concerned.
- Providing an assistant to be present when the individual has contact with children
- Redeploying the individual to alternative work in the school so that they do not have unsupervised access to children.
- Moving the child or children to classes where they will not come into contact with the individual, making it clear that this is not a punishment and parents have been consulted.
- Temporarily redeploying the individual to another role in a different location, for example to an alternative school or other work if this were possible, though regard for being a small employer limits this.

### **Definitions for outcomes of allegation investigations**

- **Substantiated:** there is sufficient evidence to prove the allegation
- **Malicious:** there is sufficient evidence to disprove the allegation and there has been a deliberate act to deceive
- **False:** there is sufficient evidence to disprove the allegation
- **Unsubstantiated:** there is insufficient evidence to either prove or disprove the allegation (this does not imply guilt or innocence)

- **Unfounded:** to reflect cases where there is no evidence or proper basis which supports the allegation being made

### Procedure for dealing with allegations

In the event of an allegation that meets the criteria above, the headteacher (or chair of governors where the headteacher is the subject of the allegation) – the ‘case manager’ – will take the following steps:

- Immediately discuss the allegation with the designated officer at the local authority. This is to consider the nature, content and context of the allegation and agree a course of action, including whether further enquiries are necessary to enable a decision on how to proceed, and whether it is necessary to involve the police and/or children’s social care services. (The case manager may, on occasion, consider it necessary to involve the police *before* consulting the designated officer – for example, if the accused individual is deemed to be an immediate risk to children or there is evidence of a possible criminal offence. In such cases, the case manager will notify the designated officer as soon as practicably possible after contacting the police).
- Inform the accused individual of the concerns or allegations and likely course of action as soon as possible after speaking to the designated officer (and the police or children’s social care services, where necessary). Where the police and/or children’s social care services are involved, the case manager will only share such information with the individual as has been agreed with those agencies.
- Where appropriate (in the circumstances described above), carefully consider whether suspension of the individual from contact with children at the school is justified or whether alternative arrangements such as those outlined above can be put in place. Advice will be sought from the designated officer, police and/or children’s social care services, as appropriate.
- **If immediate suspension is considered necessary**, agree and record the rationale for this with the designated officer. The record will include information about the alternatives to suspension that have been considered, and why they were rejected. Written confirmation of the suspension will be provided to the individual facing the allegation or concern within 1 working day, and the individual will be given a named contact at the school and their contact details.
- **If it is decided that no further action is to be taken** in regard to the subject of the allegation or concern, record this decision and the justification for it and agree with the designated officer what information should be put in writing to the individual and by whom, as well as what action should follow both in respect of the individual and those who made the initial allegation.
- **If it is decided that further action is needed**, take steps as agreed with the designated officer to initiate the appropriate action in school and/or liaise with the police and/or Children’s Social Care services as appropriate.
- Provide effective support for the individual facing the allegation or concern, including appointing a named representative to keep them informed of the progress of the case and considering what other support is appropriate. The school also has access to Employee Assistance which is confidential and on display in the school.
- Inform the parents or carers of the child/children involved about the allegation as soon as possible if they do not already know (following agreement with children’s social care services and/or the police, if applicable). The case manager will also inform the parents or carers of the requirement to maintain confidentiality about any allegations

made against teachers (where this applies) while investigations are ongoing. Any parent or carer who wishes to have the confidentiality restrictions removed in respect of a teacher will be advised to seek legal advice

- Keep the parents or carers of the child/children involved informed of the progress of the case and the outcome, where there is not a criminal prosecution, including the outcome of any disciplinary process (in confidence)
- Make a referral to the DBS where it is thought that the individual facing the allegation or concern has engaged in conduct that harmed or is likely to harm a child, or if the individual otherwise poses a risk of harm to a child
- We will inform Ofsted of any allegations of serious harm or abuse by any person living, working, or looking after children at the premises (whether the allegations relate to harm or abuse committed on the premises or elsewhere), and any action taken in respect of the allegations. This notification will be made as soon as reasonably possible and always within 14 days of the allegations being made.
- If the school is made aware that the Secretary of State has made an interim prohibition order in respect of an individual, we will immediately suspend that individual from teaching, pending the findings of the investigation by the Teaching Regulation Agency.
- Where the police are involved, wherever possible the governing board will ask the police at the start of the investigation to obtain consent from the individuals involved to share their statements and evidence for use in the school's disciplinary process, should this be required at a later point.
- If the school is made aware that the Secretary of State has made an interim prohibition order in respect of an individual, we will immediately suspend that individual from teaching, pending the findings of the investigation by the Teaching Regulation Agency.
- Where the police are involved, wherever possible they will be asked at the start of the investigation to obtain consent from the individuals involved to share their statements and evidence for use in the school's disciplinary process, should this be required at a later point.

### **Additional considerations for supply staff and all contracted staff**

If there are concerns or an allegation is made against someone not directly employed by the school, such as supply staff provided by an agency, we will take the actions below in addition to our standard procedures.

We will never cease to use a supply teacher for safeguarding reasons without first finding out the facts and liaising with the Local Authority Designated Officer to reach a suitable outcome. The governing board will discuss with the agency whether it is appropriate to suspend the supply teacher, or redeploy them to another part of the school, while the school carries out the investigation.

We will involve the agency fully, but the school will take the lead in collecting the necessary information and providing it to the local authority designated officer as required.

We will address issues such as information sharing, to ensure any previous concerns or allegations known to the agency are taken into account (we will do this, for example, as part of the allegations management meeting or by liaising directly with the agency where necessary).

When using an agency, we will inform them of our process for managing allegations, and keep them updated about our policies as necessary, and will invite the agency's HR manager or equivalent to meetings as appropriate.

## **Timescales**

- Any cases where it is clear immediately that the allegation is unsubstantiated or malicious will be resolved within 1 week.
- If the nature of an allegation does not require formal disciplinary action, we will institute appropriate action within 3 working days.
- If a disciplinary hearing is required and can be held without further investigation, we will hold this within 15 working days.

## **Specific actions**

### **Action following a criminal investigation or prosecution**

The case manager will discuss with the designated officer whether any further action, including disciplinary action, is appropriate and, if so, how to proceed, taking into account information provided by the police and/or children's social care services.

### **Conclusion of a case where the allegation is substantiated**

If the allegation is substantiated and the individual is dismissed or the school ceases to use their services, or the individual resigns or otherwise ceases to provide their services, the case manager and the school's personnel adviser will discuss with the designated officer whether to make a referral to the DBS for consideration of whether inclusion on the barred lists is required. If they think that the individual has engaged in conduct that has harmed (or is likely to harm) a child, or if they think the person otherwise poses a risk of harm to a child, they must make a referral to the DBS.

If the individual concerned is a member of teaching staff, the case manager and personnel adviser will discuss with the designated officer whether to refer the matter to the Teaching Regulation Agency to consider prohibiting the individual from teaching.

### **Individuals returning to work after suspension**

If it is decided on the conclusion of a case that an individual who has been suspended can return to work, the case manager will consider how best to facilitate this.

The case manager will also consider how best to manage the individual's contact with the child or children who made the allegation, if they are still attending the school.

### **Unsubstantiated or malicious allegations**

If an allegation is shown to be deliberately invented, or malicious, the headteacher, or other appropriate person in the case of an allegation against the headteacher, will consider whether any disciplinary action is appropriate against the pupil(s) who made it, or whether the police should be asked to consider whether action against those who made the allegation might be appropriate, even if they are not a pupil.

### **Confidentiality**

The school will make every effort to maintain confidentiality and guard against unwanted publicity while an allegation is being investigated or considered.

The case manager will take advice from the local authority's designated officer, police and children's social care services, as appropriate, to agree:

- Who needs to know about the allegation and what information can be shared.
- How to manage speculation, leaks and gossip, including how to make parents or carers of a child/children involved aware of their obligations with respect to confidentiality.

- What, if any, information can be reasonably given to the wider community to reduce speculation.
- How to manage press interest if, and when, it arises.

### **Record-keeping**

The case manager will maintain clear records about any case where the allegation or concern meets the criteria above and store them on the individual's confidential personnel file for the duration of the case. Such records will include:

- A clear and comprehensive summary of the allegation.
- Details of how the allegation was followed up and resolved.
- Notes of any action taken and decisions reached (and justification for these, as stated above).

If an allegation or concern is not found to have been malicious, the school will retain the records of the case on the individual's confidential personnel file, and provide a copy to the individual.

Where records contain information about allegations of sexual abuse, we will preserve these for the Independent Inquiry into Child Sexual Abuse (IICSA), for the term of the inquiry. We will retain all other records at least until the individual has reached normal pension age, or for 10 years from the date of the allegation if that is longer. The records of any allegation that is found to be malicious will be deleted from the individual's personnel file.

### **References**

When providing employer references, we will not refer to any allegation that has been proven to be false, unsubstantiated or malicious, or any history of allegations where all such allegations have been proven to be false, unsubstantiated or malicious.

### **Learning lessons**

After any cases where the allegations are *substantiated*, we will review the circumstances of the case with the local authority's designated officer to determine whether there are any improvements that we can make to the school's procedures or practice to help prevent similar events in the future.

This will include consideration of (as applicable):

- Issues arising from the decision to suspend the member of staff.
- The duration of the suspension.
- Whether or not the suspension was justified.
- The use of suspension when the individual is subsequently reinstated. We will consider how future investigations of a similar nature could be carried out without suspending the individual.

For referrals regarding adults in education and other information on the role of the Designated Officer (formerly LADO) please visit:  
<http://www.northamptonshirescb.org.uk/schools/referrals-cha/designated-officer/>

### **The Chair of Governors in this school is:**

NAME: Hilary Spurrier gov-hilary.spurrier@blisworth.northants.sch.uk

**In the absence of the Chair of Governors, the Vice Chair should be contacted. The Vice Chair in this school is:**

Multi-Agency Safeguarding Hub: **0300 126 7000 (Option 1)**

If it is decided that the allegation does not meet the threshold for safeguarding, it will be handed back to the employer for consideration via the school's internal procedures.

## Appendix E: Online Safety

Teaching pupils to stay safe online and keeping children safe online in school is a crucial part of safeguarding. It is essential that children are safeguarded from potentially harmful and inappropriate online material. We take a whole **school/college** approach to online to protect and educate pupils, students, and staff in their use of technology and establishes mechanisms to identify, intervene in, and escalate any concerns where appropriate.

Our approach to online safety runs through every aspect of our work with children, including (but not limited to):

- curriculum planning and RSHE;
- teacher training;
- the role and responsibilities of the designated safeguarding lead; and
- parental engagement.
- Seeking and implementing specialist advice when required

This appendix complements and should be read alongside our Online Safety policy. Staff must read the Online Safety Policy in conjunction with our Code of Conduct in relation to personal online behaviour. All staff receive online safety training at induction, with regular updates and formal annual training thereafter.

The Designated Safeguarding Lead (DSL) takes lead responsibility for online safety and understanding the filtering and monitoring systems and processes in place. The DSL attends training regularly to ensure that they understand the unique risks associated with online safety and to ensure that they are confident that they have the relevant knowledge and up to date capability required to keep children safe whilst they are online at school.

### **Risks to children**

The breadth of issues classified within online safety is considerable, but can be categorised into four areas of risk:

- **content:** being exposed to illegal, inappropriate or harmful content, for example: pornography, fake news, racism, misogyny, self-harm, suicide, anti-Semitism, radicalisation and extremism, misinformation, disinformation (including fake news) and conspiracy theories.
- **contact:** being subjected to harmful online interaction with other users; for example:

peer to peer pressure, commercial advertising and adults posing as children or young adults with the intention to groom or exploit them for sexual, criminal, financial or other purposes’.

- **conduct:** personal online behaviour that increases the likelihood of, or causes, harm; for example, making, sending and receiving explicit images (e.g consensual and non-consensual sharing of nudes and semi-nudes and/or pornography, sharing other explicit images and online bullying; and
- **commerce:** risks such as online gambling, inappropriate advertising, phishing and or financial scams.

We refer to these four areas of risk when planning our approach to online safety and ensuring that we are safeguarding children against a broad spectrum of potential online harms.

### **Filtering and monitoring**

Our filtering and monitoring procedures, including our review process, are informed by the DfE guidance manual ‘**Meeting digital and technology standards in schools and colleges**’<sup>22</sup>. For more information about the filtering and monitoring standards we adhere to, see ‘**Filtering and monitoring standards for schools and colleges**’ (March 2022).<sup>23</sup>

In order to keep children safe when using school IT equipment, we ensure that there is appropriate filtering and monitoring. We employ a company to ensure that our technology functions safely. Children are taught about online safety and to report any concerns to an adult in school.

Staff devices are provided for their work and should not be given to a pupil. These devices access more of the internet and also can access materials of a confidential nature from the system when logged in by a staff login.

We are mindful that “over-blocking” can lead to unreasonable restrictions as to what children can be taught with regard to online teaching and safeguarding and mitigate against this by **class supervision/ supervision of use and educating pupils about what to do if something inappropriate occurs**. The appropriateness of any filters and monitoring systems are a matter for will be informed in part, by the risk assessment required by the Prevent Duty.

**Generative AI- The school** will take account of guidance published by the DfE **Generative AI: product safety** expectations to support us to use generative artificial intelligence safely.

Governing Body roles:

“Whilst considering their responsibility to safeguard and promote the welfare of children and provide them with a safe environment in which to learn, governing bodies and proprietors should be doing all that they reasonably can to limit children’s exposure to the above risks from the school’s or college’s IT system. As part of this process, governing bodies and proprietors should ensure their school virtual school

has appropriate filters and monitoring systems in place and regularly review their effectiveness. They should ensure that the leadership team and relevant staff have an awareness and understanding of the provisions in place and manage them effectively and know how to escalate concerns when identified. Governing bodies and proprietors should consider the age range of

---

<sup>22</sup> <https://www.gov.uk/guidance/meeting-digital-and-technology-standards-in-schools-and-colleges>

<sup>23</sup> <https://www.gov.uk/guidance/meeting-digital-and-technology-standards-in-schools-and-colleges/filtering-and-monitoring-standards-for-schools-and-colleges>

their children, the number of children, how often they access the IT system and the proportionality of costs verses safeguarding risks.”

### **Pupil mobile phones**

Pupils are not permitted to have phones unless they walk to and from school on their own and parents wish them to have a device. This must be handed in to the school office during the day.

See Section 12 of this policy for more details about staff use of mobile phones and smart technology.

### **Remote learning**

All policies related to home learning are on the website. These specifically link to the current situation with the pandemic.

### **How to report online safety concerns**

If pupils, parents or staff have any concerns about online safety, or need to make a disclosure, they should speak to the Designated Safeguarding Lead or deputy without delay. The contact details for these members of staff can be found on the front of this policy.

### **Cybersecurity**

We ensure that we have the appropriate level of security protection procedures in place in order to safeguard systems, staff and children and we review the effectiveness of these procedures periodically to keep up with evolving cyber-crime technologies. This is informed by the DfE document ‘**Cyber security standards for schools and colleges**’.<sup>24</sup>

### **Regular review of our approach to online safety**

We recognise that technology, and risks and harms related to it evolve and changes rapidly. We carry out an annual review of our approach to online safety, supported by an annual risk assessment that considers and reflects the risks their children face. This is informed by local and national training, regular updates and the DfE guidance ‘**Meeting digital and technology standards in schools and colleges**’.<sup>25</sup>

### **More information**

For more information about online safety, please see Part 1 of Keeping Children Safe in Education (2025).

## **Appendix F: Training**

The school is committed to continuous professional development and all staff undergo rigorous and ongoing safeguarding training. We strive to ensure that staff fully understand their safeguarding responsibilities, that training promotes a culture of safeguarding and equips staff with the skills to identify any signs of abuse, neglect or harm.

---

<sup>24</sup> <https://www.gov.uk/guidance/meeting-digital-and-technology-standards-in-schools-and-colleges/cyber-security-standards-for-schools-and-colleges>

<sup>25</sup> <https://www.gov.uk/guidance/meeting-digital-and-technology-standards-in-schools-and-colleges/cyber-security-standards-for-schools-and-colleges>



### **8.1 All staff**

- All staff members will undertake safeguarding and child protection training at induction (including online safety, filtering and monitoring and whistle-blowing procedures) to ensure they understand the school's safeguarding systems, their responsibilities and can identify signs of possible abuse or neglect. This training will be regularly updated and will be in line with advice from the three safeguarding partners.
- All staff will have training on the government's anti-radicalisation strategy Prevent, to enable them to identify children at risk of being drawn into terrorism and to challenge extremist ideas.
- Staff will also receive regular safeguarding and child protection updates (for example, through emails, e-bulletins and staff meetings) as required, but at least annually.
- Contractors who are provided through a private finance initiative (PFI) or similar contract will also receive safeguarding training.
- Volunteers will receive appropriate training, as applicable.

Teachers will receive training to ensure that they can manage behaviour effectively to ensure a safe educational environment and they should have a clear understanding of the needs of all pupils.

### **8.2 The DSL and Deputy DSLs**

- The DSL and Deputy DSLs will undertake child protection and safeguarding training at least every 2 years.
- In addition, they will update their knowledge and skills at regular intervals and at least annually (for example, through e-bulletins, meeting other DSLs, or taking time to read and digest safeguarding developments).
- They will also undertake Prevent awareness training and online safety training, including any necessary training to support their understanding of the IT filtering and monitoring systems and processes in place.

### **8.3 Governors**

- All governors receive safeguarding training appropriate to their role at induction which is regularly updated, to make sure they have the knowledge and information needed to perform their functions and understand their responsibilities, including providing strategic challenge and ensuring there is a whole school approach to safeguarding.

This includes training on:

- the Prevent duty.
  - Online safety.
  - The expectations, applicable roles and responsibilities in relation to filtering and monitoring.
- As the chair of governors or proprietor may be required to act as the 'case manager' in the event that an allegation of abuse is made against the headteacher, they should receive training in managing allegations for this purpose.

### **8.4 Recruitment – interview panels**

**(Note: the following practice is a legal requirement for maintained schools and pupil referral units). See paragraphs 213 and 214 (KCSIE 2025) for further details.**

At least one person conducting any interview for a post at the school will have undertaken safer recruitment training. This will cover, as a minimum, the contents of the Department for Education's statutory guidance, KCSIE (2025), and will be in line with local safeguarding procedures.

### **8.5 Supervision**

- All staff who have contact with children and families will have supervision from their phase leaders (deputy DSLs) which will provide them with support, coaching and training, promote the interests of children and allow for confidential discussions of sensitive issues beyond the early years provider's expectation.
- This will take the form of day-to-day availability and on the job coaching as well as training development at school.

### **8.6 Specific safeguarding issues**

Staff will also receive specific training on the following issues and action will be taken if the school suspects that a child is at risk of or is the victim of;

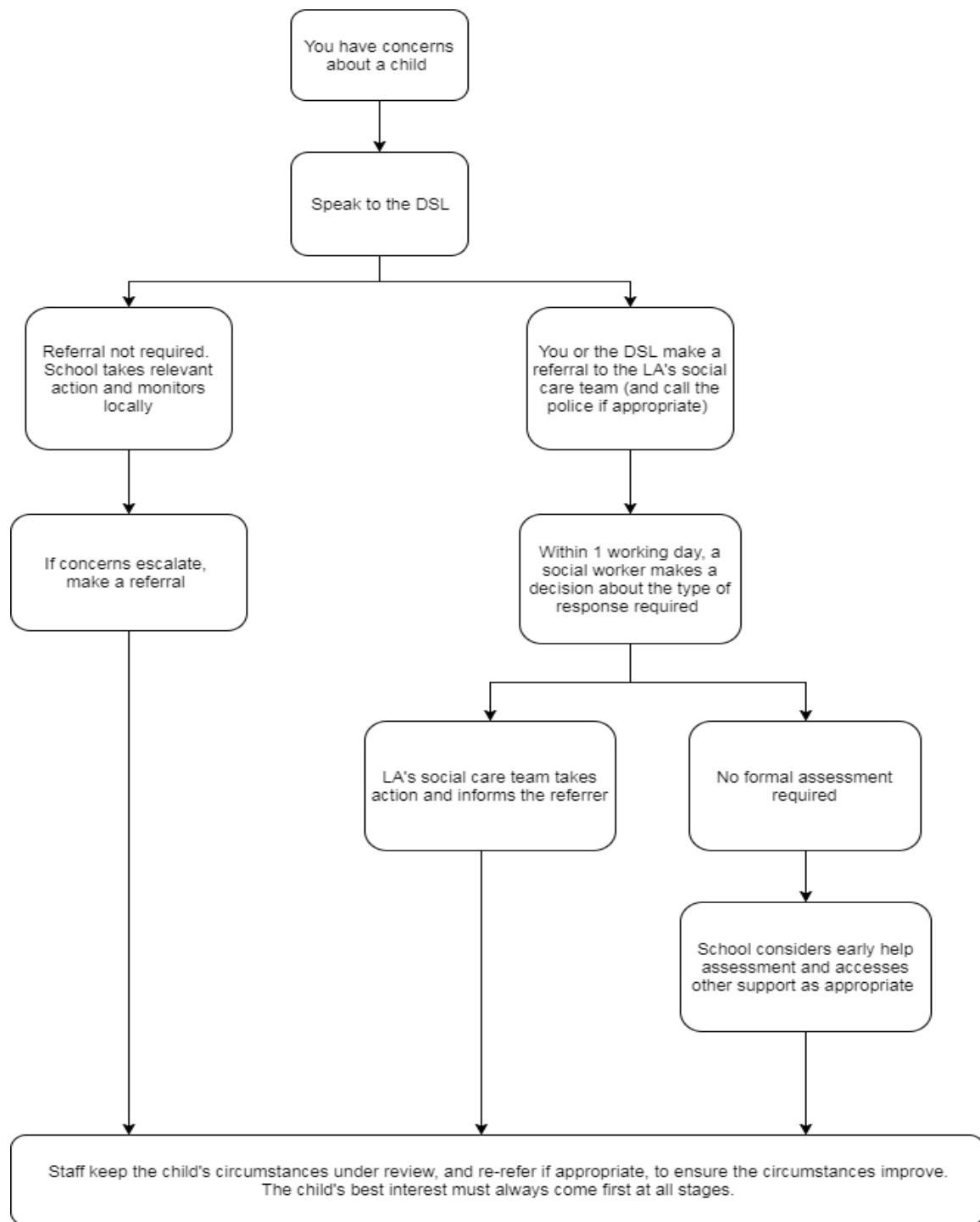
- physical abuse;
- sexual abuse;
- child sexual exploitation;
- emotional abuse;
- neglect;
- child criminal exploitation (including involvement in county lines);
- domestic abuse;
- fabricated or induced illness;
- faith-based abuse;
- female genital mutilation;
- forced marriage;
- gangs or youth violence;
- gender-based violence;
- hate;
- online safety;
- child on child abuse;
- radicalisation;
- relationship abuse;
- serious violence;
- sexual violence or sexual harassment (including child on child abuse);
- sexting or sharing of youth produced sexual imagery;
- so-called 'honour-based' abuse;
- trafficking and modern slavery.

All staff will be made aware that safeguarding incidents and/or behaviours can be associated with factors outside the school or college and/or can occur between children outside of these environments (including online). All staff are expected to consider whether children are at risk of abuse or exploitation in situations outside their families (extra-familial harm).

Staff will also be made aware of the additional safeguarding vulnerabilities of;

- children in the court system;
- children missing education;
- children with family members in prison;
- children who are homeless;
- child who have or have had a social worker;
- children who are young carers;
- children looked after or previously looked after (including those living in kinship care arrangements); and
- children with mental health problems.

## **Appendix G: Reporting and responding to concerns flowchart**



## Appendix H: Looked after and previously looked after children

We will ensure that staff have the skills, knowledge and understanding to keep looked-after children and previously looked-after children safe. In particular, we will ensure that:

Appropriate staff have relevant information about children's looked after legal status, contact arrangements with birth parents or those with parental responsibility, and care arrangements. The DSL has details of children's social workers and relevant virtual school heads.

- We have appointed a designated teacher, Danielle Warren, who is responsible for promoting the educational achievement of looked-after children and previously looked-after children in line with **statutory guidance**.<sup>26</sup>
- The designated teacher is appropriately trained and has the relevant qualifications and experience to perform the role.

As part of their role, the designated teacher will:

- Work closely with the DSL to ensure that any safeguarding concerns regarding looked-after and previously looked-after children are quickly and effectively responded to.
- Work with virtual school heads to promote the educational achievement of looked-after and previously looked-after children, including discussing how pupil premium plus funding can be best used to support looked-after children and meet the needs identified in their personal education plans.

## Appendix I: Preventative education

### Promoting safeguarding and welfare in the curriculum

Our school places a great emphasis on effective curriculums to support children's understanding. There is a named PSHE lead who ensures an effective and bespoke approach to the JIGSAW curriculum and a RSE policy in place. School values develop pupils' character to further increase their confidence should they need to make a disclosure.

The school plays a crucial role in preventative education. This is in the context of a whole-school approach to preparing pupils for life in modern Britain, and a culture of zero tolerance of sexism, misogyny/misandry, homophobia, biphobia and sexual violence/harassment. This will be underpinned by our:

- Behaviour policy
- Pastoral support system
- Planned programme of relationships, sex and health education (RSHE), which is inclusive and delivered regularly, tackling issues such as:
  - Healthy and respectful relationships.
  - Boundaries and consent.
  - Stereotyping, prejudice and equality.
  - Body confidence and self-esteem.
  - How to recognise an abusive relationship (including coercive and controlling behaviour).
  - The concepts of, and laws relating to, sexual consent, sexual exploitation, abuse, grooming, coercion, harassment, rape, domestic abuse, so-called honour-based violence such as forced marriage and female genital mutilation (FGM) and how to access support.

---

<sup>26</sup> <https://www.gov.uk/government/publications/designated-teacher-for-looked-after-children>

- What constitutes sexual harassment and sexual violence and why they are always unacceptable.

## Appendix J: Use of school/college premises for non-school activities

Where another body is providing services or activities (outside of the school's provision – specifically late evenings and weekends) we will:

- Seek assurance that the other body has appropriate safeguarding and child protection policies/procedures in place, and inspect them if needed
- We would expect there to be Designated Safeguarding Leads and have the right to obtain copies of this information
- Make sure there are arrangements for the body to liaise with the school about safeguarding arrangements, where appropriate
- Make sure that safeguarding requirements are a condition of using the school premises, including in any transfer of control agreement and that any agreement to use the premises would be terminated if the other body fails to comply.

In the event that the school/college receives an allegation relating to an incident that happened when an individual or organisation was using their school premises for the purposes of running activities for children, we will follow our safeguarding policies and procedures, including informing the LADO.<sup>27</sup>

In addition to the above, the school currently has a long-standing partnership with an educational and sports provision company who are based on site. Those regularly in attendance on school site, are treated as part of Blisworth Primary School and as such receive induction and other related training and checks.

## Appendix K: How we safeguard pupils attending alternative provision

Where we place a pupil with an alternative provision provider, we understand that we continue to be responsible for the safeguarding of that pupil and we will satisfy ourselves that the placement meets the pupil's needs.

**We will** obtain written information from the alternative provider that appropriate safeguarding checks have been carried out on individuals working at their establishment (i.e. those checks that schools would otherwise perform on their own staff). This includes written confirmation that the alternative provider will inform the commissioning school of any arrangements that may put the child at risk (i.e. staff changes), so that the commissioning school can ensure itself that appropriate safeguarding checks have been carried out on new staff.

<sup>27</sup> Further information can be found here: <https://www.gov.uk/government/publications/keeping-children-safe-in-out-of-school-settings-code-of-practice/keeping-children-safe-during-community-activities-after-school-clubs-and-tuition-non-statutory-guidance-for-providers-running-out-of-school-settings>

**Blisworth** will have processes in place to know where a child is based during school hours. This includes having records of the address of the alternative provider and any subcontracted provision or satellite sites the child may attend. We will regularly review the alternative provision placements and review them at a minimum of half termly to ensure that the child is regularly attending and the placement continues to be safe and meets the child's needs. Where safeguarding concerns arise, the placement will be immediately ended if any concerns are not addressed.

Our school and the other provider would liaise to ensure that communication and records are effective and the most appropriate named DSL/ Deputy is responsible. Sharing of information will be authorised between provisions to ensure that safeguarding needs are continued to be met. Written records will be kept of any communications between settings in SLT files.

***The statutory guidance relevant to this area is:***

- **Alternative Provision** DFE statutory guidance and
- **Education for children with health needs who cannot attend school** - GOV.UK ([www.gov.uk](http://www.gov.uk)) – DFE statutory guidance.